

Recombinant human PHOSPHO1 protein

Catalog Number: ATGP1974

PRODUCT INFORMATION

Expression system

E.coli

Domain

1-267aa

UniProt No.

Q8TCT1

NCBI Accession No.

NP_848595

Alternative Names

Phosphoethanolamine/phosphocholine phosphatase

PRODUCT SPECIFICATION

Molecular Weight

32.2 kDa (291aa) confirmed by MALDI-TOF

Concentration

0.5mg/ml (determined by Bradford assay)

Formulation

Liquid in. Phosphate-Buffered Saline (pH 7.4) containing 50% glycerol

Purity

> 95% by SDS-PAGE

Tag

His-Tag

Application

SDS-PAGE

Storage Condition

Can be stored at +2C to +8C for 1 week. For long term storage, aliquot and store at -20C to -80C. Avoid repeated freezing and thawing cycles.

BACKGROUND

Description

Phosphoethanolamine/phosphocholine phosphatase, also known as PHOSPHO1, has a high activity toward phosphoethanolamine (PEA) and phosphocholine (PCho). This protein is involved in the generation of inorganic phosphate for bone mineralization. Recombinant human PHOSPHO1 protein, fused to His-tag at N-terminus, was expressed in E. coli and purified by using conventional chromatography techniques.

Amino acid Sequence

MGSSHHHHHH SGLVPRGSH MGSMSGCFP VSGLRCLSRD GRMAAQGAPR FLITDFDET IVDENSDDSI VRAAPGQRLP

Recombinant human PHOSPHO1 protein

Catalog Number: ATGP1974

ESLRATYREG FYNEYMQRVF KYLGEQGVVP RDLSAIYEAI PLSPGMSDLL QFVAKQGACF EVILISDANT FGVESLRAA
GHHS LFRRIL SNPSGPDARG LLALRPFHTH SCARCPANMC KHKVLS DYLR ERAHDGVHFE RLFYVGDGAN DFCPMGLLAG
GDVAFPRRGY PMHRLIQEAQ KAEPSSFRAS VVPWETAADV RLHLQQVLKS C

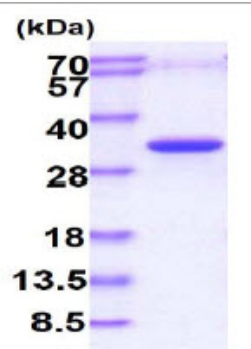
General References

Roberts S.J., et al. (2004) *Biochem. J.* 382:59-65

Houston B R., et al. (2004) *Bone.* 34:629-637

DATA

SDS-PAGE



15% SDS-PAGE (3ug)

3ug by SDS-PAGE under reducing condition and visualized by coomassie blue stain.