

# Recombinant human DGCR6 protein

Catalog Number: ATGP1979

## PRODUCT INFORMATION

---

### Expression system

E.coli

### Domain

1-220aa

### UniProt No.

Q14129

### NCBI Accession No.

NP\_005666

### Alternative Names

Protein DGCR6, DiGeorge syndrome critical region gene 6

## PRODUCT SPECIFICATION

---

### Molecular Weight

27 kDa (243aa) confirmed by MALDI-TOF

### Concentration

0.5mg/ml (determined by Bradford assay)

### Formulation

Liquid in. 20mM Tris-HCl buffer (pH 8.0) containing 0.2M NaCl, 20% glycerol

### Purity

> 95% by SDS-PAGE

### Tag

His-Tag

### Application

SDS-PAGE

### Storage Condition

Can be stored at +2C to +8C for 1 week. For long term storage, aliquot and store at -20C to -80C. Avoid repeated freezing and thawing cycles.

## BACKGROUND

---

### Description

DGCR6 shares homology with the *Drosophila melanogaster* gonadal protein, which participates in gonadal and germ cell development, and with the gamma-1 subunit of human laminin. This protein is a candidate for involvement in DiGeorge syndrome pathology and in schizophrenia. Recombinant human DGCR6 protein, fused to His-tag at N-terminus, was expressed in *E. coli* and purified by using conventional chromatography techniques.

### Amino acid Sequence

MGSSHHHHHH SGLVPRGSH MGSMERYAGA LEEVADGARQ QERHYQLLSA LQSLVKELPS SFQQRLSYTT LSDLALALLD

# Recombinant human DGCR6 protein

Catalog Number: ATGP1979

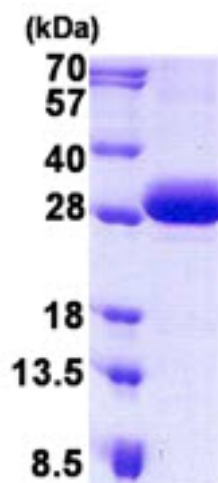
GTVFEIVQGL LEIQHLTEKS LYNQRLRLQN EHRVLRQALR QKHQEAQQAC RPHNLPVLQA AQQRELEAVE HRIRREEQRAM  
DQKIVLELDR KVADQQSTLE KAGVAGFYVT TNPQELMLQM NLELIRKLQ QRGCWAGKAA LGLGGPWQLP AAQCDQKGSP  
VPP

## General References

Pfuhl T, Durr M, Spurrk A, et al. (2005). Hum Genet. 117(1):70-80.

## DATA

### SDS-PAGE



3ug by SDS-PAGE under reducing condition and visualized by coomassie blue stain.

15% SDS-PAGE (3ug)