

Recombinant human delta Sarcoglycan/SGCD protein

Catalog Number: ATGP1980

PRODUCT INFORMATION

Expression system

E.coli

Domain

57-289aa

UniProt No.

Q92629

NCBI Accession No.

NP_001121681

Alternative Names

Delta-sarcoglycan, 35DAG, CMD1L, DAGD, SG-delta, SGCDP, SGD, LGMD2F, Delta-SG

PRODUCT SPECIFICATION

Molecular Weight

28.1 kDa (257aa)

Concentration

1mg/ml (determined by Bradford assay)

Formulation

Liquid in. 20mM Tris-HCl buffer (pH 8.0) containing 0.4M urea, 10% glycerol

Purity

> 85% by SDS-PAGE

Tag

His-Tag

Application

SDS-PAGE, Denatured

Storage Condition

Can be stored at +2C to +8C for 1 week. For long term storage, aliquot and store at -20C to -80C. Avoid repeated freezing and thawing cycles.

BACKGROUND

Description

SGCD is one of the four known components of the sarcoglycan complex, which is a subcomplex of the dystrophin-glycoprotein complex (DGC). DGC forms a link between the F-actin cytoskeleton and the extracellular matrix. This protein is expressed most abundantly in skeletal and cardiac muscle. The mutations in this gene have been associated with autosomal recessive limb-girdle muscular dystrophy and dilated cardiomyopathy. Alternatively spliced transcript variants encoding distinct isoforms have been observed. In melanocytic cells SGCD gene expression may be regulated by MITF. Recombinant human SGCD protein, fused to His-tag at N-terminus, was

Recombinant human delta Sarcoglycan/SGCD protein

Catalog Number: ATGP1980

expressed in E. coli.

Amino acid Sequence

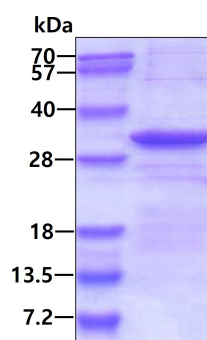
<MGSSHHHHHH SSGLVPRGSH RSHM>KVMNFT IDGMGNLRIT EKGLKLEGDS EFLQPLYAKE IQSRPGNALY
FKSARNVTVN ILNDQTKVLT QLITGPKAVE AYGKKFEVKT VSGKLLFSAD NNEVVVGAER LRVLGAEGTV FPKSIETPNV
RADPFKELRL ESPTRSLVME APKGVEINAE AGNMEATCRT ELRLESKDGE IKLDAAKIRL PRLPHGSYTP TGTRQKVFEI
CVCANGRLFL SQAGAGSTCQ INTSVCL

General References

Sylvius N, Duboscq-Bidot L, et al. (2003). Am J Med Genet A. 120A(1):8-12.

DATA

SDS-PAGE



3ug by SDS-PAGE under reducing condition and visualized by coomassie blue stain