

Recombinant human GRP/LGALS protein

Catalog Number: ATGP1981

PRODUCT INFORMATION

Expression system

E.coli

Domain

1-172aa

UniProt No.

Q3ZCW2

NCBI Accession No.

NP_054900

Alternative Names

Galectin-related protein, GRP, Galectin like protein, HSPC159, Lectin galactoside-binding-like protein

PRODUCT SPECIFICATION

Molecular Weight

21.4 kDa (195aa) confirmed by MALDI-TOF

Concentration

0.5mg/ml (determined by Bradford assay)

Formulation

Liquid in. 20mM Tris-HCl buffer (pH 8.0) containing 0.1M NaCl, 20% glycerol, 1mM DTT

Purity

> 90% by SDS-PAGE

Tag

His-Tag

Application

SDS-PAGE

Storage Condition

Can be stored at +2C to +8C for 1 week. For long term storage, aliquot and store at -20C to -80C. Avoid repeated freezing and thawing cycles.

BACKGROUND

Description

Galectin-related protein, also known as LGALS, is a 172 amino acid protein that contains one galectin domain. Galectins are a family of soluble b-galactoside-binding animal lectins that modulate cell-to-cell adhesion and cell-to-extracellular matrix (ECM) interactions and also play a role in tumor progression, pre-mRNA splicing and apoptosis. However, LGALS does not appear to bind carbohydrates or lactose because the critical residues required for binding are not conserved. Recombinant human LGALS protein, fused to His-tag at N-terminus, was expressed in E. coli and purified by using conventional chromatography techniques.

Recombinant human GRP/LGALSII protein

Catalog Number: ATGP1981

Amino acid Sequence

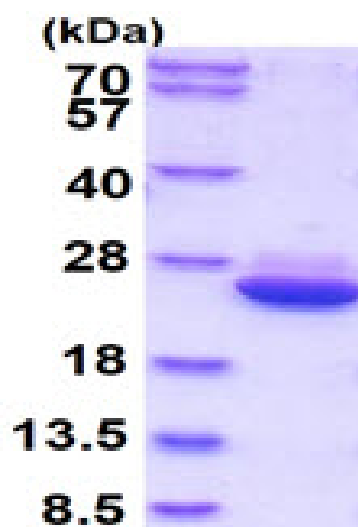
MGSSHHHHHH SGLVPRGSH MGSMAGSVAD SDAVVKLDDG HLNNSLSSPV QADVYPRLI VPFCGHIKGG
MRPGKKVLM GIVDLNPESF AISLTCGDSE DPPADVAIEL KAVFTDRQLL RNCSISGERG EEQSAIPYFP FIPDQPRVE
ILCEHPRFRV FVDGHQLDFD YHRIQTLSAI DTIKINGDLQ ITKLG

General References

Zhou D., et al. (2008) Proteins. 71:1582-1588
Walti M A., et al. (2008) Proteins. 72: 804-808.

DATA

SDS-PAGE



3ug by SDS-PAGE under reducing condition and visualized by coomassie blue stain.

15% SDS-PAGE (3ug)