

Recombinant human SSX1 protein

Catalog Number: ATGP1985

PRODUCT INFORMATION

Expression system

E.coli

Domain

1-188aa

UniProt No.

Q16384

NCBI Accession No.

NP_005626

Alternative Names

Protein SSX1, CT5.1, SSRC

PRODUCT SPECIFICATION

Molecular Weight

24.3 kDa (211aa)

Concentration

1mg/ml (determined by Bradford assay)

Formulation

Liquid in. 20mM Tris-HCl buffer (pH 8.0) containing 0.4M urea, 10% glycerol

Purity

> 85% by SDS-PAGE

Tag

His-Tag

Application

SDS-PAGE, Denatured

Storage Condition

Can be stored at +2C to +8C for 1 week. For long term storage, aliquot and store at -20C to -80C. Avoid repeated freezing and thawing cycles.

BACKGROUND

Description

Protein SSX1 belongs to the family of highly homologous synovial sarcoma X (SSX) breakpoint proteins. SSX proteins are localized to the nucleus and expressed in testis and several types of cancers and, therefore, they are classified as C/T (cancer/testis) antigens. These proteins may function as transcriptional repressors. SSX1 genes have been involved in the t (X;18) translocation characteristically found in all synovial sarcomas. This translocation results in the fusion of the synovial sarcoma translocation gene on chromosome 18 to one of the SSX genes on chromosome X. The encoded hybrid proteins are probably responsible for transforming activity.

Recombinant human SSX1 protein

Catalog Number: ATGP1985

Recombinant human SSX1 protein, fused to His-tag at N-terminus, was expressed in E. coli.

Amino acid Sequence

MGSSHHHHHH SGLVPRGSH MGSMNGDDTF AKRPRDDAKA SEKRSAFDD IATYFSKKEW KKMKYSEKIS YVYMKRNYKA
MTKLGFKVTL PPFMCNKQAT DFQGNDFDND HNRRIQVEHP QMTFGRLHRI IPKIMPKKPA EDENDSKGVS EASGPQNDGK
QLHPPGKANI SEKINKRSGP KRGKHAWTHR LRERKQLVIY EEISDPEEDD E

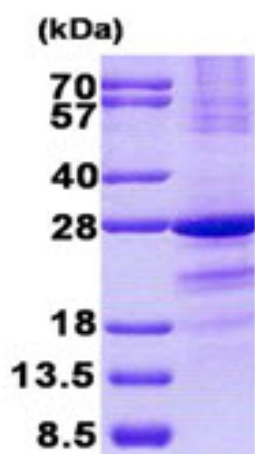
General References

Crew A J., et al. (1995) EMBO J. 14:2333-2340.

Nilsson G., et al. (1999) Cancer Res. 59:3180-3184.

DATA

SDS-PAGE



3ug by SDS-PAGE under reducing condition and visualized by coomassie blue stain.

15% SDS-PAGE (3ug)