

# Recombinant human SDR16C5 protein

Catalog Number: ATGP1993

## PRODUCT INFORMATION

---

### Expression system

E.coli

### Domain

32-269aa

### UniProt No.

Q8N3Y7

### NCBI Accession No.

NP\_620419

### Alternative Names

Short chain dehydrogenase/reductase family 16C member5, Short chain dehydrogenase/reductase family 16C, member5, RDH2, RDH-E2, RDHE2

## PRODUCT SPECIFICATION

---

### Molecular Weight

28.3 kDa (261aa) confirmed by MALDI-TOF

### Concentration

1mg/ml (determined by Bradford assay)

### Formulation

Liquid in. 20mM Tris-HCl buffer (pH 8.0) containing 0.15M NaCl, 10% glycerol, 1mM DTT

### Purity

> 90% by SDS-PAGE

### Tag

His-Tag

### Application

SDS-PAGE

### Storage Condition

Can be stored at +2C to +8C for 1 week. For long term storage, aliquot and store at -20C to -80C. Avoid repeated freezing and thawing cycles.

## BACKGROUND

---

### Description

Short chain dehydrogenase/reductase family 16C, member5, also known as SDR16C5, is active in both the oxidative and reductive directions. This protein oxidizes all-trans-retinol in all-trans-retinaldehyde. No activity was detected with 11-cis-retinol or 11-cis-retinaldehyde as substrates with either NAD<sup>+</sup>/NADH or NADP<sup>+</sup>/NADPH. Recombinant human SDR16C5 protein, fused to His-tag at N-terminus, was expressed in E. coli and purified by using conventional chromatography techniques.

## Recombinant human SDR16C5 protein

Catalog Number: ATGP1993

### Amino acid Sequence

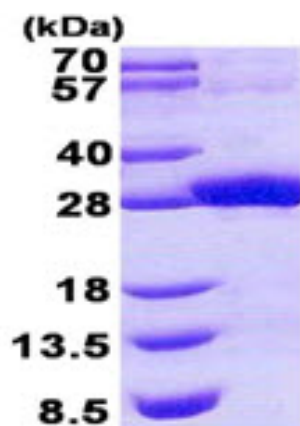
MGSSHHHHHHH SSGLVPRGSH MGSPKPRKNV AGEIVLITGA GSGLGRLLAL QFARLGSVLV LWDINKEGNE ETCKMAREAG  
ATRVHAYTCD CSQKEGVYRV ADQVKKEVGD VSILINNAGI VTGKKFLDCP DELMEKSFVDV NFKAHLWTYK AFLPAMIAND  
HGHLVCISSS AGLSGVNGLA DYCASKFAAF GFAESVFVET FVQKQKGIKT TIVCPFFIKT GMFEGCTTGC PSLLPILPEK  
YAVEKIVEAI LQEKMYLYMP K

### General References

Matsuzaka Y., et al. (2002) Biochem. Biophys. Res. Commun. 297:1171-1180  
Lee S.-A., et al. (2009) Chem. Biol. Interact. 178:182-187

## DATA

### SDS-PAGE



3ug by SDS-PAGE under reducing condition and visualized by coomassie blue stain.

15% SDS-PAGE (3ug)