

# Recombinant human CD3 gamma/CD3G protein

Catalog Number: ATGP2000

## PRODUCT INFORMATION

---

**Expression system**

E.coli

**Domain**

23-116aa

**UniProt No.**

P09693

**NCBI Accession No.**

NP\_000064

**Alternative Names**

T-cell surface glycoprotein CD3 gamma chain, CD3G, CD3-GAMMA, IMD17, T3G, CD3 gamma subunit of T-cell receptor complex, CD3g antigen gamma polypeptide, TiT3 complex, T-cell receptor T3 gamma chain

## PRODUCT SPECIFICATION

---

**Molecular Weight**

13.1 kDa (117aa)

**Concentration**

1mg/ml (determined by Bradford assay)

**Formulation**

Liquid in. 20mM Tris-HCl buffer (pH 8.0) containing 0.4M urea, 10% glycerol

**Purity**

&gt; 90% by SDS-PAGE

**Tag**

His-Tag

**Application**

SDS-PAGE, Denatured

**Storage Condition**

Can be stored at +2C to +8C for 1 week. For long term storage, aliquot and store at -20C to -80C. Avoid repeated freezing and thawing cycles.

## BACKGROUND

---

**Description**

The protein encoded by this gene is the CD3-gamma polypeptide, which together with CD3-epsilon, -delta and -zeta, and the T-cell receptor alpha/beta and gamma/delta heterodimers, forms the T-cell receptor-CD3 complex. This complex plays an important role in coupling antigen recognition to several intracellular signal-transduction pathways. The genes encoding the epsilon, gamma and delta polypeptides are located in the same cluster on chromosome 11. Defects in this gene are associated with T cell immunodeficiency. Recombinant human CD3G

## Recombinant human CD3 gamma/CD3G protein

Catalog Number: ATGP2000

protein, fused to His-tag at N-terminus, was expressed in E. coli.

### Amino acid Sequence

MGSSHHHHHH SSGLVPRGSH MGSQSIKGNH LVKVYDYQED GSVLLTCDAE AKNITWFKDG KMIGFLTEDK KKWNLGSSNAK  
DPRGMYQCKG SQNKSKPLQV YYRMCQNCIE LNAATIS

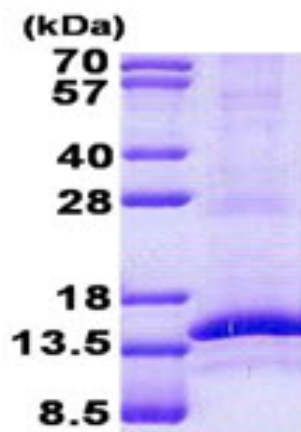
### General References

Kjer-Nielsen L., et al. (2004) Proc. Natl. Acad. Sci. u.S.A. 101:7675-7680

Tao W.A., et al. (2005) Nat. Methods. 2:591-598

## DATA

### SDS-PAGE



3ug by SDS-PAGE under reducing condition and visualized by coomassie blue stain.

15% SDS-PAGE (3ug)