

Recombinant human Endothelin 2/EDN2 protein

Catalog Number: ATGP2001

PRODUCT INFORMATION

Expression system

E.coli

Domain

25-178aa

UniProt No.

P20800

NCBI Accession No.

NP_001947

Alternative Names

Endothelin 2, ET2, PPET2

PRODUCT SPECIFICATION

Molecular Weight

19.9 kDa (177aa)

Concentration

1mg/ml (determined by Bradford assay)

Formulation

Liquid in. 20mM Tris-HCl buffer (pH 8.0) containing 0.4M urea, 10% glycerol

Purity

> 85% by SDS-PAGE

Tag

His-Tag

Application

SDS-PAGE, Denatured

Storage Condition

Can be stored at +2C to +8C for 1 week. For long term storage, aliquot and store at -20C to -80C. Avoid repeated freezing and thawing cycles.

BACKGROUND

Description

EDN2 is a member of the endothelin protein family of secretory vasoconstrictive peptides. The preproprotein is processed to a short mature form which functions as a ligand for the endothelin receptors that initiate intracellular signaling events. This protein is involved in a wide range of biological processes, such as hypertension and ovulation. Recombinant human EDN2 protein, fused to His-tag at N-terminus, was expressed in E. coli.

Recombinant human Endothelin 2/EDN2 protein

Catalog Number: ATGP2001

Amino acid Sequence

<MGSSHHHHHH SSGLVPRGSH MGS>QAAATLE QPASSSHAQG THLRLRRCSC SSWLDKECVY FCHLDIIWVN
TPEQTAPYGL GNPPRRRRRS LPRRCQCSSA RDPACATFCL RRPWTEAGAV PSRKSPADVF QTGKTGATTG ELLQRLDIS
TVKSLFAKRQ QEAMREPRST HSRWRKR

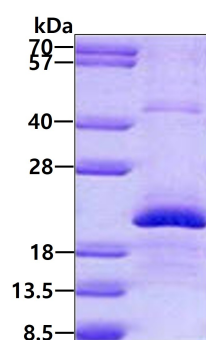
General References

Bourgeois C., et al. (1997) J. Clin. Endocrinol. Metab. 82:3116-3123

Ohkubo S., et al. (1990) FEBS Lett. 274:136-140

DATA

SDS-PAGE



3ug by SDS-PAGE under reducing condition and visualized by coomassie blue stain.