

Recombinant human GEMIN6 protein

Catalog Number: ATGP2004

PRODUCT INFORMATION

Expression system

E.coli

Domain

1-167aa

UniProt No.

Q8WXD5

NCBI Accession No.

NP_079051

Alternative Names

Gem-associated protein 6, FLJ23459, Gemin-6, SIP2

PRODUCT SPECIFICATION

Molecular Weight

21.9 kDa (190aa) confirmed by MALDI-TOF

Concentration

0.5mg/ml (determined by Bradford assay)

Formulation

Liquid in. 20mM Tris-HCl buffer (pH 8.0) containing 0.15M NaCl, 30% glycerol, 1mM DTT

Purity

> 90% by SDS-PAGE

Tag

His-Tag

Application

SDS-PAGE

Storage Condition

Can be stored at +2C to +8C for 1 week. For long term storage, aliquot and store at -20C to -80C. Avoid repeated freezing and thawing cycles.

BACKGROUND

Description

GEMIN6 is part of a large macromolecular complex, localized to both the cytoplasm and the nucleus, that plays a role in the cytoplasmic assembly of small nuclear ribonucleoproteins (snRNPs). Other members of this complex includes SMN, GEMIN2, GEMIN3, GEMIN4, and GEMIN5. Recombinant human GEMIN6 protein, fused to His-tag at N-terminus, was expressed in E. coli and purified by using conventional chromatography techniques.

Amino acid Sequence

MGSSHHHHHH SGLVPRGSH MGSMSSEWMKK GPLEWQDYIY KEVRVTASEK NEYKGWVLT DPVSANIVLV

Recombinant human GEMIN6 protein

Catalog Number: ATGP2004

NFLEDGSM SV TGIMGHAVQT VETMNEGDHR VREKLMHLFT SGDCKAYSPE DLEERKNSLK KWLEKNHIPI TEQGDAPRTL
CVAGVLTIDP PYGPENCSSS NEILSRVQD LIEGHLTASQ

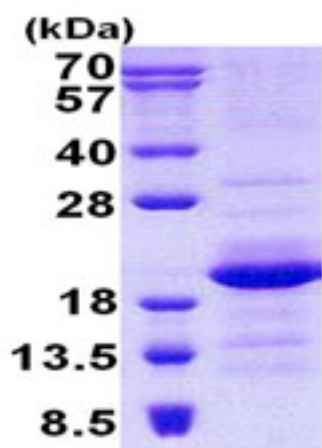
General References

Carissimi,C., et al. (2006) J. Biol. Chem. 281 (48), 37009-37016

Pellizzoni,L., et al. (2002) J. Biol. Chem. 277 (9), 7540-7545

DATA

SDS-PAGE



15% SDS-PAGE (3ug)

3ug by SDS-PAGE under reducing condition and visualized by coomassie blue stain.