

# Recombinant human PP14/Glycodelin protein

Catalog Number: ATGP2007

## PRODUCT INFORMATION

---

### Expression system

E.coli

### Domain

19-180aa

### UniProt No.

P09466

### NCBI Accession No.

NP\_002562.2

### Alternative Names

Glycodelin precursor, GD, GdA, GdF, GdS, PAEG, PEP, PP14, PAEP

## PRODUCT SPECIFICATION

---

### Molecular Weight

21 kDa (185aa) confirmed by MALDI-TOF

### Concentration

0.5mg/ml (determined by Bradford assay)

### Formulation

Liquid in. 20mM Tris-HCl buffer (pH 8.0) containing 0.15M NaCl, 30% glycerol, 1mM DTT

### Purity

> 90% by SDS-PAGE

### Tag

His-Tag

### Application

SDS-PAGE

### Storage Condition

Can be stored at +2C to +8C for 1 week. For long term storage, aliquot and store at -20C to -80C. Avoid repeated freezing and thawing cycles.

## BACKGROUND

---

### Description

PAEP is a member of the kernel lipocalin super family whose members share relatively low sequence similarity but have highly conserved exon/intron structure and three-dimensional protein folding. Most lipocalins are clustered on the long arm of chromosome 9. This protein been previously referred to as pregnancy-associated endometrial alpha-2-globulin, placental protein 14, and glycodelin, but has been officially named progesterone-associated endometrial protein. Recombinant human PAEP protein, fused to His-tag at N-terminus, was expressed in E. coli and purified by using conventional chromatography techniques.

# Recombinant human PP14/Glycodelin protein

Catalog Number: ATGP2007

## Amino acid Sequence

<MGSSHHHHHH SSGLVPRGSH MGS>MDIPQTK QDLELPKLAG TWHSMAMATN NISLMATLKA PLRVHITSLL  
PTPEDNLEIV LHRWENNVCV EKKVLGEKTE NPKKFKINYT VANEATLLDT DYDNFLFLCL QDTTTPIQSM MCQYLARVLV  
EDDEIMQGF I RAFRPLPRHL WYLLDLKQME EPCR F

## General References

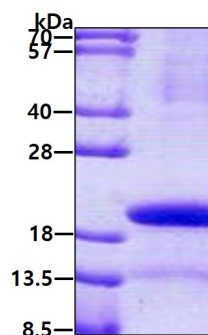
Seppala M, Taylor RN, et al. (2002). *Endocr Rev.* 23(4):401-30.

Seppala M, Koistinen H, et al. (2007). *Hum Reprod update.* 13(3):275-87.

## DATA

---

### SDS-PAGE



3ug by SDS-PAGE under reducing condition and visualized by coomassie blue stain.