

Recombinant human MRPL13 protein

Catalog Number: ATGP2018

PRODUCT INFORMATION

Expression system

E.coli

Domain

1-178aa

UniProt No.

Q9BYD1

NCBI Accession No.

NP_054797

Alternative Names

Mitochondrial ribosomal protein L13, L13, L13A, L13mt, RPL13, RPML13

PRODUCT SPECIFICATION

Molecular Weight

23.1 kDa (201aa)

Concentration

1mg/ml (determined by Bradford assay)

Formulation

Liquid in. 20mM Tris-HCl buffer (pH 8.0) containing 0.4M urea, 10% glycerol

Purity

> 85% by SDS-PAGE

Tag

His-Tag

Application

SDS-PAGE, Denatured

Storage Condition

Can be stored at +2C to +8C for 1 week. For long term storage, aliquot and store at -20C to -80C. Avoid repeated freezing and thawing cycles.

BACKGROUND

Description

Mammalian mitochondrial ribosomal proteins are encoded by nuclear genes and help in protein synthesis within the mitochondrion. Mitochondrial ribosomes (mitoribosomes) consist of a small 28S subunit and a large 39S subunit. They have an estimated 75% protein to rRNA composition compared to prokaryotic ribosomes, where this ratio is reversed. Another difference between mammalian mitoribosomes and prokaryotic ribosomes is that the latter contain a 5S rRNA. Among different species, the proteins comprising the mitoribosome differ greatly in sequence, and sometimes in biochemical properties, which prevents easy recognition by sequence homology.

Recombinant human MRPL13 protein

Catalog Number: ATGP2018

MRPL13 is a 39S subunit protein. Recombinant human MRPL13 protein, fused to His-tag at N-terminus, was expressed in *E. coli*.

Amino acid Sequence

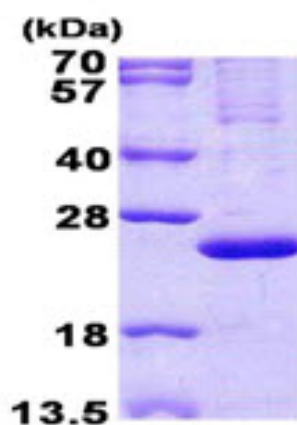
MGSSHHHHHHH SGLVPRGSH MGSMSFSRA PQQWATFARI WYLLDGKMQP PGKLAAMASI RLQGLHKPVY
HALSDCGDHV VIMNTRHIAF SGNKWEQKVY SSHTGYGGF RQVTAAQLHL RDPVAIVKLA IYGMLPKNLH RRTMMERLHL
FPDEYIPEDI LKNLVEELPQ PRKIPKRLDE YTQEEIDAFP RLWTPPEDYR L

General References

Suzuki T., et al. (2001) *J. Biol. Chem.* 276, 21724-36.

DATA

SDS-PAGE



3 μ g by SDS-PAGE under reducing condition and visualized by coomassie blue stain.

15% SDS-PAGE (3 μ g)