

Recombinant human CAMP/LL37/FALL39 protein

Catalog Number: ATGP2021

PRODUCT INFORMATION

Expression system

E.coli

Domain

34-173aa

UniProt No.

P49913

NCBI Accession No.

NP_004336.3

Alternative Names

Cathelicidin antimicrobial peptide preproprotein, Cathelicidin antimicrobial peptide preproprotein, CAP-18, CAP18, CRAMP, FALL-39, FALL39, HSD26, LL37

PRODUCT SPECIFICATION

Molecular Weight

18.4 kDa (163aa)

Concentration

0.5mg/ml (determined by Bradford assay)

Formulation

Liquid in. 20mM Tris-HCl buffer (pH 8.0) containing 0.4M UREA, 10% glycerol

Purity

> 85% by SDS-PAGE

Tag

His-Tag

Application

SDS-PAGE

Storage Condition

Can be stored at +2C to +8C for 1 week. For long term storage, aliquot and store at -20C to -80C. Avoid repeated freezing and thawing cycles.

BACKGROUND

Description

CAMP is a member of an antimicrobial peptide family, characterized by a highly conserved N-terminal signal peptide containing a cathelin domain and a structurally variable cationic antimicrobial peptide, which is produced by extracellular proteolysis from the C-terminus. The protein has several functions in addition to antimicrobial activity, including cell chemotaxis, immune mediator induction and inflammatory response regulation. Recombinant human CAMP protein, fused to His-tag at N-terminus, was expressed in E. coli.

Recombinant human CAMP/LL37/FALL39 protein

Catalog Number: ATGP2021

Amino acid Sequence

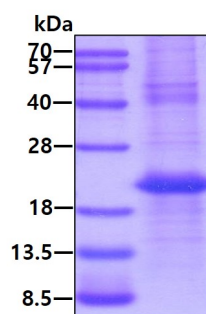
<MGSSHHHHHH SSGLVPRGSH MGS>QVLSYKE AVLRAIDGIN QRSSDANLYR LLDLDPRTM DGDPDTPKPV
SFTVKETVCP RTTQSPEDC DFKKDGLVLR CMGTVTLNQA RGSFDISCDK DNKRFALLGD FFRKSKEKIG KEFKRIVQRI
KDFLRNLVPR TES

General References

Nijnik,A.,et al. (2012) J. Leukoc. Biol. 91 (4), 599-607
Rosen,G., et al. (2012) Infect. Immun. 80 (3), 1107-1114

DATA

SDS-PAGE



3ug by SDS-PAGE under reducing condition and visualized by coomassie blue stain.