

# Recombinant human POP4 protein

Catalog Number: ATGP2025

## PRODUCT INFORMATION

---

### Expression system

E.coli

### Domain

1-220aa

### UniProt No.

O95707

### NCBI Accession No.

NP\_006618

### Alternative Names

Ribonuclease P protein subunit p29, RPP29

## PRODUCT SPECIFICATION

---

### Molecular Weight

27.8 kDa (243aa)

### Concentration

1mg/ml (determined by Bradford assay)

### Formulation

Liquid in. 20mM Tris-HCl buffer (pH 8.0) containing 0.4M urea, 10% glycerol

### Purity

> 85% by SDS-PAGE

### Tag

His-Tag

### Application

SDS-PAGE, Denatured

### Storage Condition

Can be stored at +2C to +8C for 1 week. For long term storage, aliquot and store at -20C to -80C. Avoid repeated freezing and thawing cycles.

## BACKGROUND

---

### Description

POP4 is one of the protein subunits of the small nucleolar ribonucleoprotein complexes: the endoribonuclease for mitochondrial RNA processing complex and the ribonuclease P complex. POP4 is localized to the nucleus and associates directly with the RNA component of these complexes. This protein is involved in processing of precursor RNAs. Recombinant human POP4 protein, fused to His-tag at N-terminus, was expressed in E. coli.

### Amino acid Sequence

MGSSHHHHHH SGLVPRGSH MGSMSVIYH ALSQKEANDS DVQPSGAQRA EAFVRAFLKR STPRMSPQAR

# Recombinant human POP4 protein

Catalog Number: ATGP2025

EDQLQRKAVV LEYFTRHKRK EKKKKAKGLS ARQRRELRLF DIKPEQQRYS LFLPLHELWK QYIRDLCSGL KPDTQPQMIQ  
AKLLKADLHG AIISVTKSKC PSYVGITGIL LQETKHIFKI ITKEDRLKVI PKLNCFVFTVE TDGFISYIYG SKFQLRSSER  
SAKKFKAKGT IDL

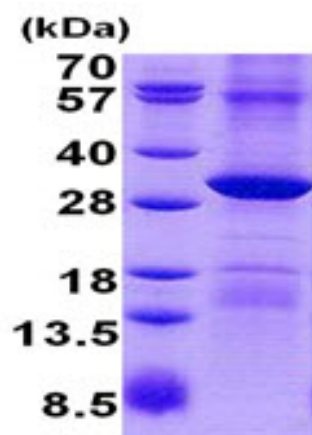
## General References

Welting, T.J., et al. (2006) RNA 12 (7), 1373-1382

Sharin, E., et al. (2005) Nucleic Acids Res. 33 (16), 5120-5132

## DATA

### SDS-PAGE



15% SDS-PAGE (3ug)

3ug by SDS-PAGE under reducing condition and visualized by coomassie blue stain.