

Recombinant human HSP60 protein

Catalog Number: ATGP2027

PRODUCT INFORMATION

Expression system

E.coli

Domain

27-573aa

UniProt No.

P10809

NCBI Accession No.

NP_955472

Alternative Names

60 kDa heat shock protein mitochondrial, 60 kDa heat shock protein, mitochondrial, CPN60, GROEL, HLD4, HSP-60, HSP60, HSP65, HuCHA60, SPG13

PRODUCT SPECIFICATION

Molecular Weight

60 kDa (572aa)

Concentration

0.5mg/ml (determined by Bradford assay)

Formulation

Liquid in. 20mM Tris-HCl buffer (pH 8.0) containing 0.1M NaCl, 10% glycerol

Purity

> 90% by SDS-PAGE

Tag

His-Tag

Application

SDS-PAGE

Storage Condition

Can be stored at +2C to +8C for 1 week. For long term storage, aliquot and store at -20C to -80C. Avoid repeated freezing and thawing cycles.

BACKGROUND

Description

HSP60 is a mitochondrial chaperonin that is typically held responsible for the transportation and refolding of proteins from the cytoplasm into the mitochondrial matrix. In addition to its role as a heat shock protein, HSP60 functions as a chaperonin to assist in folding linear amino acid chains into their respective three-dimensional structure. Through the extensive study of groEL, HSP60's bacterial homolog, HSP60 has been deemed essential in the synthesis and transportation of essential mitochondrial proteins from the cell's cytoplasm into the

Recombinant human HSP60 protein

Catalog Number: ATGP2027

mitochondrial matrix. Recombinant human HSP60 protein, fused to His-tag at N-terminus, was expressed in *E. coli* and purified by using conventional chromatography techniques.

Amino acid Sequence

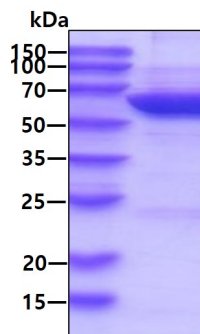
<MGSSHHHHHH SSGLVPRGSH MGSHM>AKDVK FGADARALML QGVDLLADAV AVTMGPKGRT VIIQSWGSP
KVTKDGVTVA KSIDLKDKYK NIGAKLVQDV ANNTNEEAGD GTTTATVLAR SIAKEGFEDI SKGANPVEIR RGVMLAVDAV
IAELKKQSKP VTTPEEIAQV ATISANGDKE IGNIISDAMK KVGRKGVITV KDGKTLNDEL EIEGDMKFDR GYISPYFINT
SKGQKCEFQD AYVLLSEKKI SSIQSIVPAL EIANHRKPL VIIAEDVDGE ALSTLVNRL KVGLQVVAVK APGFGDNRKN
QLKDMAIATG GAVFGEEGLT LNLEDVQPHD LGKVGEVIVT KDDAMLLKGG GDKAQIEKRI QEIIQLDVT TSEYEKEKLN
ERLAKLSDGV AVLKVGGTSD VEVNEKKDRV TDALNATRAA VEEGIVLGGG CALLRCIPAL DSLTPANEDQ KIGIEIKRT
LKIPAMTIK NAGVEGSLIV EKIMQSSSEV GYDAMAGDFV NMVEKGIIDP TKVVRTALLD AAGVASLLTT AEVVVTEIPK
EEKDPGMGAM GGMGGGMGGG MF

General References

Cappello F, Di Stefano A, et al. (2006). *Cancer*. 107(10):2417-24.

DATA

SDS-PAGE



3 μ g by SDS-PAGE under reducing condition and visualized by coomassie blue stain.