

Recombinant human ARPC3 protein

Catalog Number: ATGP2035

PRODUCT INFORMATION

Expression system

E.coli

Domain

1-178aa

UniProt No.

O15145

NCBI Accession No.

NP_005710

Alternative Names

Actin-related protein 2/3 complex subunit 3, ARC21, p21-Arc

PRODUCT SPECIFICATION

Molecular Weight

22.9 kDa (201aa) confirmed by MALDI-TOF

Concentration

0.5mg/ml (determined by Bradford assay)

Formulation

Liquid in. 20mM Tris-HCl buffer (pH 8.0) containing 0.15M NaCl, 30% glycerol, 1mM DTT

Purity

> 95% by SDS-PAGE

Tag

His-Tag

Application

SDS-PAGE

Storage Condition

Can be stored at +2C to +8C for 1 week. For long term storage, aliquot and store at -20C to -80C. Avoid repeated freezing and thawing cycles.

BACKGROUND

Description

Actin-related protein 2/3 complex subunit 3, also known as ARPC3, is one of seven subunits of the human Arp2/3 protein complex. Localized to the cytoplasm and cytoskeleton, ARPC3 is thought to interact with p20-ARC and play an important role in the structural integrity of the protein complex. Recombinant human ARPC3 protein, fused to His-tag at N-terminus, was expressed in E. coli and purified by using conventional chromatography techniques.

Recombinant human ARPC3 protein

Catalog Number: ATGP2035

Amino acid Sequence

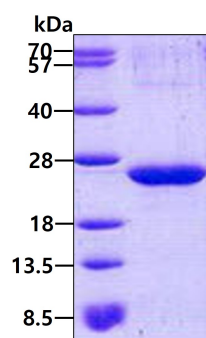
<MGSSHHHHHH SSGLVPRGSH MGS>MPAYHSS LMDPDTKLIG NMALLPIRSQ FKGPAPRETK DTDIVDEAIY YFKANVFFKN YEIKNEADRT LIYITLYISE CLKKLQKCNS KSQGEKEMYT LGITNFPIPG EPGFPLNAIY AKPANKQEDE VMRAYLQQLR QETGLRLCEK VFDPQNDKPS KWWTCFVKRQ FMNKSLSGPG Q

General References

Goldberg D J., et al. (2000) J Neurosci Res. 60:458-467.

DATA

SDS-PAGE



3ug by SDS-PAGE under reducing condition and visualized by coomassie blue stain.