

Recombinant human CD46 protein

Catalog Number: ATGP2036

PRODUCT INFORMATION

Expression system

E.coli

Domain

35-313aa

UniProt No.

P15529

NCBI Accession No.

NP_758860.1

Alternative Names

Membrane cofactor protein isoform 14, AHuS2, MCP, MIC10, TLX, TRA2.10

PRODUCT SPECIFICATION

Molecular Weight

33.8 kDa (302aa) confirmed by MALDI-TOF

Concentration

0.5mg/ml (determined by Bradford assay)

Formulation

Liquid in. 20mM Tris-HCl buffer (pH 8.0) containing 0.1M NaCl, 20% glycerol

Purity

> 85% by SDS-PAGE

Tag

His-Tag

Application

SDS-PAGE

Storage Condition

Can be stored at +2C to +8C for 1 week. For long term storage, aliquot and store at -20C to -80C. Avoid repeated freezing and thawing cycles.

BACKGROUND

Description

Membrane cofactor protein isoform 14, also known as CD46, is a type I membrane protein that has cofactor activity for inactivation of complement components C3b and C4b by serum factor I. This function resides in the complement control protein repeats (CCPs), with CCP1-4 essential for regulation. CD46 is widely distributed on thymocytes, T cells, B cells, monocytes, granulocytes, NK cells, platelets, endothelial cells, epithelial cells, fibroblasts, placenta and sperm, but not on erythrocyte. Recombinant human CD46 protein, fused to His-tag at N-terminus, was expressed in E. coli and purified by using conventional chromatography techniques.

Recombinant human CD46 protein

Catalog Number: ATGP2036

Amino acid Sequence

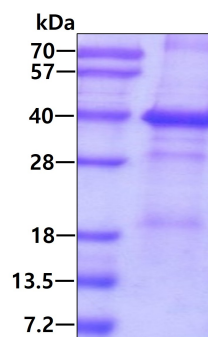
<MGSSHHHHHH SSGLVPRGSH MGS>CEEPPTF EAMELIGKPK PYEIGERVD YKCKKGYFYI PPLATHTICD RNHTWLPVSD
DACYRETCPY IRDPLNGQAV PANGTYEFGY QMHFICNEGY YLIGEEILYC ELKGSVAIWS GKPPICEKVL CTPPPKIKNG
KHTFSEVEVF EYLDAVTYSC DPAPGDPFS LIGESTIYCG DNSVWSRAAP ECKVVKCRFP VVENGKQISG FGKKFYKAT
VMFECDKGFY LDGSDTIVCD SNSTWDPPVP KCLKGPRPTY KPPVSNYPGY PKPEEGILDS LD

General References

Riley R C., et al. (2002) Mol Reprod Dev. 62:534-546.
Iwata K., et al. (1995) J Biol Chem. 270:15148-15152.

DATA

SDS-PAGE



3 μ g by SDS-PAGE under reducing condition and visualized by coomassie blue stain.