

Recombinant human MRM1 protein

Catalog Number: ATGP2038

PRODUCT INFORMATION

Expression system

E.coli

Domain

21-353aa

UniProt No.

Q6IN84

NCBI Accession No.

NP_079140

Alternative Names

Mitochondrial rRNA methyltransferase 1 homolog, FLJ22578, Mitochondrial large ribosomal RNA ribose methylase

PRODUCT SPECIFICATION

Molecular Weight

38.8 kDa (356aa) confirmed by MALDI-TOF

Concentration

0.25mg/ml (determined by Bradford assay)

Formulation

Liquid in. 20mM Tris-HCl buffer (pH 8.0) containing 0.15M NaCl, 30% glycerol, 1mM DTT, 0.1mM PMSF

Purity

> 90% by SDS-PAGE

Tag

His-Tag

Application

SDS-PAGE

Storage Condition

Can be stored at +2C to +8C for 1 week. For long term storage, aliquot and store at -20C to -80C. Avoid repeated freezing and thawing cycles.

BACKGROUND

Description

Mitochondrial rRNA methyltransferase 1 homolog, also known as MRM1, probably methylates the ribose of guanosine G-2270 in the peptidyl transferase center of the mitochondrial large ribosomal RNA (21S). Recombinant human MRM1 protein, fused to His-tag at N-terminus, was expressed in E. coli and purified by using conventional chromatography techniques.

Amino acid Sequence

MGSSHHHHHH SGLVPRGSH MGSSHAARHG ERPGGEELSR LLLDDLVPST RLELLFGMTP CLLALQAARR SVARLLLQAG

Recombinant human MRM1 protein

Catalog Number: ATGP2038

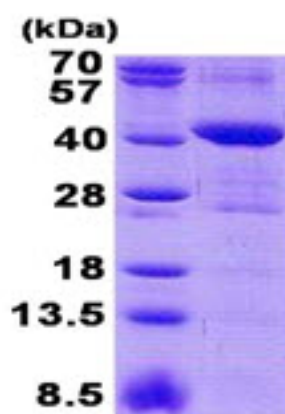
KAGLQ GKRAE LLRMAEARDI PVLRRPRQKL DTMCRYQVHQ GVCMEVSPLR PRPWREAGEA SPGDDPQQLW LVL DGIQDPR
NFGAVLRSAH FLGVDKVITS RRNSCPLTPV VSKSSAGAME VMDVFSTDDL TGFLQTKAQQ GWLVAGTVGC PSTEDPQSSE
IPIMSCLEFL WERPTLLVLG NEGSGLSQEV QASCQLLLTI LPRRQLPPGL ESLNVSVAAG ILLHSICSQR KGFPTEGERR
QLLQDPQEPS ARSEGLSMAQ HPGLSSGPEK ERQNEG

General References

Ota T., et al. (2004) Nat. Genet. 36:40-45

DATA

SDS-PAGE



3ug by SDS-PAGE under reducing condition and visualized by coomassie blue stain.

15% SDS-PAGE (3ug)