

Recombinant human LAGE3 protein

Catalog Number: ATGP2043

PRODUCT INFORMATION

Expression system

E.coli

Domain

1-143aa

UniProt No.

Q14657

NCBI Accession No.

NP_006005

Alternative Names

L antigen family member 3, CVG5, DXS9879E, DXS9951E, ESO3, ITBA2

PRODUCT SPECIFICATION

Molecular Weight

17.2 kDa (166aa) confirmed by MALDI-TOF

Concentration

0.25mg/ml (determined by Bradford assay)

Formulation

Liquid in. 20mM Tris-HCl buffer (pH 8.0) containing 0.15M NaCl, 50% glycerol, 2mM DTT

Purity

> 85% by SDS-PAGE

Tag

His-Tag

Application

SDS-PAGE

Storage Condition

Can be stored at +2C to +8C for 1 week. For long term storage, aliquot and store at -20C to -80C. Avoid repeated freezing and thawing cycles.

BACKGROUND

Description

L antigen family member 3, also known as LAGE3, belongs to the CTAG family. Members of the LAGE/ESO gene family are clustered together on human chromosome Xq28 and have similar exon-intron structures. Unlike the other family members, which are normally expressed only in testis and activated in a wide range of human tumors, LAGE3 is ubiquitously expressed in somatic tissues. This protein is also highly conserved in mouse and rat, suggesting that the encoded protein is functionally important. Recombinant human LAGE3 protein, fused to His-tag at N-terminus, was expressed in E. coli and purified by using conventional chromatography techniques.

Recombinant human LAGE3 protein

Catalog Number: ATGP2043

Amino acid Sequence

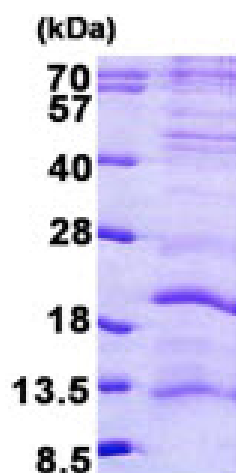
MGSSHHHHHH SSSLVPRGSH MGSMRDADAD AGGGADGGDG RGGHSCRGGV DTAAAPAGGA PPAHAPGPGR
DAASAARGSR MRPHIFTLV PFPTPLEAEI AHGSLAPDAE PHQRVVGKDL TVSGRILVVR WKAEDCRLLR ISVINFLDQL
SLVVRTMQRV GPPVSR

General References

Alpen B., et al. (2002) Gene. 297:141-149.

DATA

SDS-PAGE



3ug by SDS-PAGE under reducing condition and visualized by coomassie blue stain.

15% SDS-PAGE (3ug)