

Recombinant human PRDC/GREM2 protein

Catalog Number: ATGP2049

PRODUCT INFORMATION

Expression system

E.coli

Domain

22-168aa

UniProt No.

Q9H772

NCBI Accession No.

NP_071914

Alternative Names

Gremlin-2 precursor, Gremlin-2 precursor, CKTSF1B2, DAND3, PRDC

PRODUCT SPECIFICATION

Molecular Weight

19 kDa (170aa)

Concentration

1mg/ml (determined by Bradford assay)

Formulation

Liquid in. 20mM Tris-HCl buffer (pH 8.0) containing 0.4M urea, 10% glycerol

Purity

> 85% by SDS-PAGE

Tag

His-Tag

Application

SDS-PAGE, Denatured

Storage Condition

Can be stored at +2C to +8C for 1 week. For long term storage, aliquot and store at -20C to -80C. Avoid repeated freezing and thawing cycles.

BACKGROUND

Description

GREM2 is a member of the BMP (bone morphogenic protein) antagonist family. Like BMPs, BMP antagonists contain cystine knots and typically form homo- and heterodimers. The CAN (cerberus and dan) subfamily of BMP antagonists, to which this protein belongs, is characterized by a C-terminal cystine knot with an eight-membered ring. The antagonistic effect of the secreted glycosylated protein is likely due to its direct binding to BMP proteins. As an antagonist of BMP, this protein may play a role in regulating organogenesis, body patterning, and tissue differentiation. Recombinant human GREM2 protein, fused to His-tag at N-terminus, was expressed in E.

Recombinant human PRDC/GREM2 protein

Catalog Number: ATGP2049

coli.

Amino acid Sequence

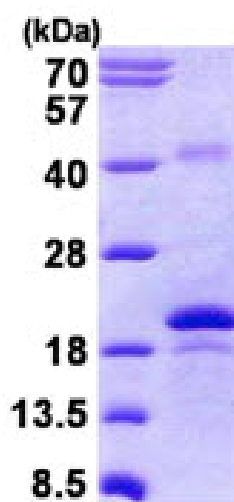
MGSSHHHHHHH SGLVPRGSH MGSRKNRPG AIPSPYKDGS SNNSERWQHQ IKEVLASSQE ALVVTERKYL KSDWCKTQPL
RQTVSEEGCR SRTILNRFY GQCNSFYIPR HVKKEEESFQ SCAFCKPQRV TSVLVELECP GLDPPFRLKK IQKVKQCRCM
SVNLSDSDKQ

General References

Sudo S, et al. (2004). J Biol Chem. 279(22):23134-41.

DATA

SDS-PAGE



3ug by SDS-PAGE under reducing condition and visualized by coomassie blue stain.

15% SDS-PAGE (3ug)