

# Recombinant human GOLGA7 protein

Catalog Number: ATGP2073

## PRODUCT INFORMATION

---

### Expression system

E.coli

### Domain

1-137aa

### UniProt No.

Q7Z5G4

### NCBI Accession No.

NP\_001002296

### Alternative Names

Golgin subfamily A member 7 isoform a, Golgin subfamily A member 7 isoform a, GCP16, GOLGA3AP1, GOLGA7A, HSPC041

## PRODUCT SPECIFICATION

---

### Molecular Weight

18 kDa (160aa) confirmed by MALDI-TOF

### Concentration

0.5mg/ml (determined by Bradford assay)

### Formulation

Liquid in. 20mM Tris-HCl buffer (pH 8.0) containing 0.15M NaCl, 30% glycerol, 1mM DTT

### Purity

> 90% by SDS-PAGE

### Tag

His-Tag

### Application

SDS-PAGE

### Storage Condition

Can be stored at +2C to +8C for 1 week. For long term storage, aliquot and store at -20C to -80C. Avoid repeated freezing and thawing cycles.

## BACKGROUND

---

### Description

GOLGA7 belongs to the ERF4 family. This protein may be involved in protein transport from Golgi to cell surface. The ZDHHC9-GOLGA7 complex is a palmitoyltransferase specific for HRAS and NRAS. GOLGA7 is palmitoylated on Cys-69 and Cys-72; which is required for Golgi localization and interaction with GOLGA3. Recombinant human GOLGA7 protein, fused to His-tag at N-terminus, was expressed in E. coli and purified by using conventional chromatography techniques.

# Recombinant human GOLGA7 protein

Catalog Number: ATGP2073

## Amino acid Sequence

MGSSHHHHHH SSSLVPRGSH MGSMRPQQAP VSGKVFQIRD YSSGTRCQFQ TKFPAELENR IDRQQFEETV RTLNNLYAEA  
EKLGGQSYLE GCLACLTAYT IFLCMETHYE KVLKKVSKYI QEQNEKIYAP QGLLLTDPIE RGLRVIEITI YEDRGMSSGR

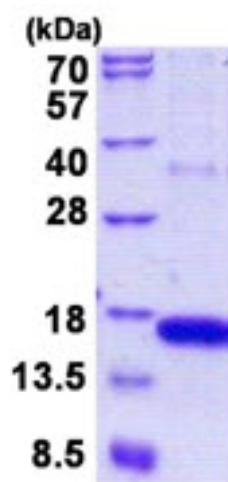
## General References

Ohta E, Misumi Y, et al. (2003). J. Biol. Chem. 278:51957-51967.

## DATA

---

### SDS-PAGE



3ug by SDS-PAGE under reducing condition and visualized by coomassie blue stain.

15% SDS-PAGE (3ug)