

# Recombinant human Ephrin-A3 protein

Catalog Number: ATGP2094

## PRODUCT INFORMATION

---

**Expression system**

E.coli

**Domain**

23-214aa

**UniProt No.**

P52797

**NCBI Accession No.**

NP\_004943

**Alternative Names**

LERK3, EPLG3, Ephrin-A3, EPH-related receptor tyrosine kinase ligand 3, EHL1 ligand, EHK1-L, EFNA3, EFL2

## PRODUCT SPECIFICATION

---

**Molecular Weight**

24 kDa (217aa)

**Concentration**

1mg/ml (determined by Bradford assay)

**Formulation**

Liquid in. 20mM Tris-HCl buffer (pH 8.0) containing 0.4M urea, 10% glycerol

**Purity**

&gt; 90% by SDS-PAGE

**Tag**

His-Tag

**Application**

SDS-PAGE, Denatured

**Storage Condition**

Can be stored at +2C to +8C for 1 week. For long term storage, aliquot and store at -20C to -80C. Avoid repeated freezing and thawing cycles.

## BACKGROUND

---

**Description**

EFNA3 is a member of the ephrin (EPH) family. The ephrins and EPH-related receptors comprise the largest subfamily of receptor protein-tyrosine kinases and have been implicated in mediating developmental events, especially in the nervous system and in erythropoiesis. Based on their structures and sequence relationships, ephrins are divided into the ephrin-A (EFNA) class, which are anchored to the membrane by a glycosylphosphatidylinositol linkage, and the ephrin-B (EFNB) class, which are transmembrane proteins. Recombinant human EFNA3 protein, fused to His-tag at N-terminus, was expressed in E. coli.

# Recombinant human Ephrin-A3 protein

Catalog Number: ATGP2094

## Amino acid Sequence

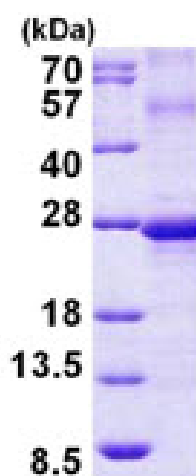
MGSSHHHHHH SGLVPRGSH MGSHMQGPGG ALGNRHAVYW NSSNQHLRRE GYTVQVNVND YLDIYCPHYN  
SSGVGPGAGP GPGGGAEQYV LYMSRNGYR TCNASQGFKR WECNRPHAPH SPIKFSEKFQ RYSAFSLGYE FHAGHEYYYI  
STPTHNLHWK CLRMKVFVCC ASTSHSGEKP VPTLPQFTMG PNVKINVLED FEGENQVVK LEKSISG

## General References

Carmona MA, Murai KK, et al. Proc Natl Acad Sci U S A. 2009 Jul 28  
106(30):12524-9.

## DATA

### SDS-PAGE



3ug by SDS-PAGE under reducing condition and visualized by coomassie blue stain.

15% SDS-PAGE (3ug)