

Recombinant human USE1 protein

Catalog Number: ATGP2099

PRODUCT INFORMATION

Expression system

E.coli

Domain

1-231aa

UniProt No.

Q9NZ43

NCBI Accession No.

NP_060937

Alternative Names

SNARE-like tail-anchored protein 1 homolog, USE1-like protein (USE1L), unconventional SNARE in the ER 1 homolog, p31, SLT1, MDS032, D12, USE1L

PRODUCT SPECIFICATION

Molecular Weight

28.3 kDa (254aa) confirmed by MALDI-TOF

Concentration

0.25mg/ml (determined by Bradford assay)

Formulation

Liquid in. 20mM Tris-HCl buffer (pH 8.0) containing 10% glycerol 0.1M NaCl, 1mM DTT

Purity

> 80% by SDS-PAGE

Tag

His-Tag

Application

SDS-PAGE

Storage Condition

Can be stored at +2C to +8C for 1 week. For long term storage, aliquot and store at -20C to -80C. Avoid repeated freezing and thawing cycles.

BACKGROUND

Description

uSE1, as known as P31, is a vesicle transport protein. This protein is a component of a SNARE complex consisting of STX18, uSE1L, BNIP1/SEC20L and SEC22B. It interacts directly with STX18. SNARE may be involved in targeting and fusion of Golgi-derived retrograde transport vesicles with the ER. Recombinant human uSE1 protein, fused to His-tag at N-terminus, was expressed in E. coli and purified by using conventional chromatography.

Recombinant human USE1 protein

Catalog Number: ATGP2099

Amino acid Sequence

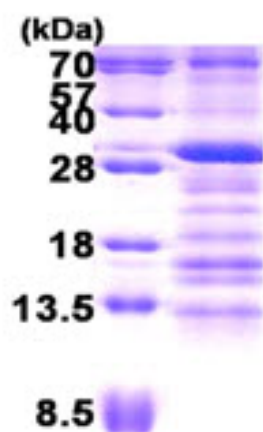
MGSSHHHHHH SSGLVPRGSH MGSMAASRLE LNLVRLLSRC EAMAAEKRDV DEWRLEKYVG ALEDMLQALK
VHASKPASEV INEYSWKVDF LKGMQLQAEKL TSSSEKALAN QFLAPGRVPT TARERVPATK TVHLQSRARY TSEMRSELLG
TDSAEPMDV RKRTGVAGSQ PVSEKQSAAE LDLVLQRHQN LQEKLAEEML GLARSLKTNT LAAQSVIKKD NQTLSHSLKM
ADQNLEKLKT ESERLEQHTQ KSVN

General References

Meiringer CT. et al. (2011) J Biol Chem. 286:25039-25046
Dilcher M. et al. (2003) EMBO J. 22(14):3664-74.

DATA

SDS-PAGE



3ug by SDS-PAGE under reducing condition and visualized by coomassie blue stain.

15% SDS-PAGE (3ug)