

# Recombinant human RPL23A protein

Catalog Number: ATGP2102

## PRODUCT INFORMATION

---

### Expression system

E.coli

### Domain

1-156aa

### UniProt No.

P62750

### NCBI Accession No.

NP\_000975

### Alternative Names

Ribosomal protein L23a, L23A, MDA20

## PRODUCT SPECIFICATION

---

### Molecular Weight

20.1 kDa (179aa) confirmed by MALDI-TOF

### Concentration

0.5mg/ml (determined by Bradford assay)

### Formulation

Liquid in. 20mM Tris-HCl buffer (pH 8.0) containing 0.2M NaCl, 50% glycerol, 2mM DTT, 250mM imidazole

### Purity

> 80% by SDS-PAGE

### Tag

His-Tag

### Application

SDS-PAGE

### Storage Condition

Can be stored at +2C to +8C for 1 week. For long term storage, aliquot and store at -20C to -80C. Avoid repeated freezing and thawing cycles.

## BACKGROUND

---

### Description

Ribosomes, the organelles that catalyze protein synthesis, consist of a small 40S subunit and a large 60S subunit. Together these subunits are composed of 4 RNA species and approximately 80 structurally distinct proteins. RPL23A is a ribosomal protein that is a component of the 60S subunit. The protein belongs to the L23P family of ribosomal proteins. It is located in the cytoplasm. The protein may be one of the target molecules involved in mediating growth inhibition by interferon. In yeast, the corresponding protein binds to a specific site on the 26S rRNA. Recombinant human RPL23A protein, fused to His-tag at N-terminus, was expressed in E. coli

# Recombinant human RPL23A protein

Catalog Number: ATGP2102

and purified by using conventional chromatography techniques.

## Amino acid Sequence

MGSSHHHHHHH SGLVPRGSH MGSMAPKAKK EAPAPPKAEA KAKALKAKKA VLKGVHSHKK KKIRTSPTR RPKTLRLRRQ  
PKYPRKSAPR RNKLDHYAII KFPLTTESAM KKIEDNNTLV FIVDVKANKH QIKQAVKKLY DIDVAKVNTL IRPDGEKKAY  
VRLAPDYDAL DVANKIGII

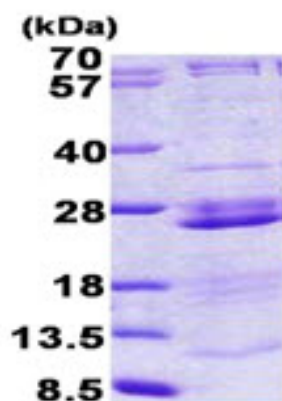
## General References

Choudhary C., et al. (2009) Science. 325:834-840

Wang B., et al. (2008) Anal. Chem. 80:9526-9533

## DATA

### SDS-PAGE



3ug by SDS-PAGE under reducing condition and visualized by coomassie blue stain.

15% SDS-PAGE (3ug)