

# Recombinant human RPS12 protein

Catalog Number: ATGP2124

## PRODUCT INFORMATION

---

### Expression system

E.coli

### Domain

1-132aa

### UniProt No.

P25398

### NCBI Accession No.

NP\_001007

### Alternative Names

40S ribosomal protein S12, S12

## PRODUCT SPECIFICATION

---

### Molecular Weight

16.9 kDa (155aa) confirmed by MALDI-TOF

### Concentration

0.25mg/ml (determined by Bradford assay)

### Formulation

Liquid in. 20mM Tris-HCl buffer (pH 8.0) containing 0.15M NaCl, 30% glycerol

### Purity

> 85% by SDS-PAGE

### Tag

His-Tag

### Application

SDS-PAGE

### Storage Condition

Can be stored at +2C to +8C for 1 week. For long term storage, aliquot and store at -20C to -80C. Avoid repeated freezing and thawing cycles.

## BACKGROUND

---

### Description

RPS12 is a ribosomal protein that is a component of the 40S subunit. The protein belongs to the S12E family of ribosomal proteins. It is located in the cytoplasm. Increased expression of this gene in colorectal cancers compared to matched normal colonic mucosa has been observed. As is typical for genes encoding ribosomal proteins, there are multiple processed pseudogenes of this gene dispersed through the genome. Recombinant human RPS12 protein, fused to His-tag at N-terminus, was expressed in E. coli and purified by using conventional chromatography techniques.

## Recombinant human RPS12 protein

Catalog Number: ATGP2124

### Amino acid Sequence

MGSSHHHHHH SSSLVPRGSH MGSM AEEGIA AGGVMDVNTA LQEV LKTALI HDGLARGIRE AAKALDKRQA HLCVLASNCD  
EPMYVKLVEA LCAEHQINLI KVDDNKKLGE WVGLCKIDRE GKPRKVVGCS CVVVKDYGKE SQAQDVIEEY FKCKK

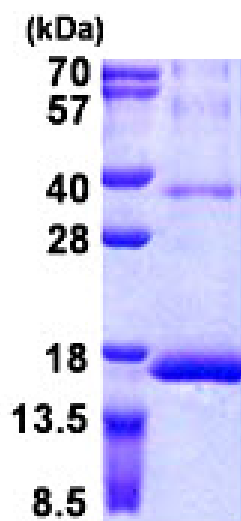
### General References

Yoshihama M, uechi T, et al. (2002). Genome Res.12(3):379-90.

Yu Y, Ji H, Doudna JA, et al. (2005). Protein Sci. 14(6):1438-46.

## DATA

### SDS-PAGE



3ug by SDS-PAGE under reducing condition and visualized by coomassie blue stain.

15% SDS-PAGE (3ug)