

Recombinant human IL-13R alpha 2/IL13RA2 protein

Catalog Number: ATGP2139

PRODUCT INFORMATION

Expression system

E.coli

Domain

27-343aa

UniProt No.

Q14627

NCBI Accession No.

NP_000631

Alternative Names

Interleukin 13 receptor subunit alpha 2, IL-13 receptor subunit alpha-2, IL-13R subunit alpha-2, IL-13R-alpha-2, Interleukin-13-binding protein, CD213a2, IL13R, IL13BP, cancer/testis antigen 19, CT19

PRODUCT SPECIFICATION

Molecular Weight

39.5 kDa (340aa)

Concentration

1mg/ml (determined by Bradford assay)

Formulation

Liquid in. 20mM Tris-HCl buffer (pH 8.0) containing 0.4M urea, 10% glycerol

Purity

> 85% by SDS-PAGE

Tag

His-Tag

Application

SDS-PAGE, Denatured

Storage Condition

Can be stored at +2C to +8C for 1 week. For long term storage, aliquot and store at -20C to -80C. Avoid repeated freezing and thawing cycles.

BACKGROUND

Description

IL13RA2 is closely related to IL13RA1, a subunit of the interleukin 13 receptor complex. This protein binds IL13 with high affinity, but lacks cytoplasmic domain, and does not appear to function as a signal mediator. It is reported to play a role in the internalization of IL13. Recombinant human IL13RA2 protein, fused to His-tag at N-terminus, was expressed in E. coli.

Recombinant human IL-13R alpha 2/IL13RA2 protein

Catalog Number: ATGP2139

Amino acid Sequence

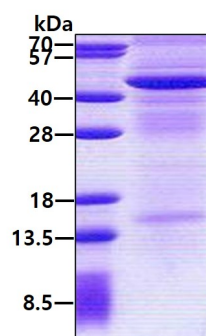
<MGSSHHHHH SSGLVPRGSH MGS>DTEIKVN PPQDFEIVDP GYLGYLQW QPPLSLDHFK ECTVEYELKY
RNIGSETWKT IITKNLHYKD GFDLNKGIEA KIHTLLPWQC TNGSEVQSSW AETTYWISPO GIPETKVQDM DCVYYNWQYL
LCSWKPGIGV LLDTNYNLFY WYEGLDHALQ CVDYIKADGQ NIGCRFPYLE ASDYKDFYIC VNGSSENKPI RSYFTFQLQ
NIVKPLPPVY LFTRESSCE IKLKWSIPLG PIPARCFDYE IEIREDDTTL VTATVENETY TLKTTNETRQ LCFVVRSKVN
IYCSDDGIWS EWSDKQCWEG EDLSKKTLLR

General References

Fujisawa,T., et al. (2012) Int. J. Cancer 131 (2), 344-356
Barderas,R., et al. (2012) Cancer Res. 72 (11), 2780-2790

DATA

SDS-PAGE



3ug by SDS-PAGE under reducing condition and visualized by coomassie blue stain.