

Recombinant human CPPED1 protein

Catalog Number: ATGP2148

PRODUCT INFORMATION

Expression system

E.coli

Domain

1-314aa

UniProt No.

Q9BRF8

NCBI Accession No.

NP_060810

Alternative Names

Calcineurin-like phosphoesterase domain containing 1, CSTP1

PRODUCT SPECIFICATION

Molecular Weight

37.9 kDa (337aa) confirmed by MALDI-TOF

Concentration

0.5mg/ml (determined by Bradford assay)

Formulation

Liquid in. 20mM Tris-HCl buffer (pH 8.0) containing 0.15M NaCl, 20% glycerol

Purity

> 85% by SDS-PAGE

Tag

His-Tag

Application

SDS-PAGE

Storage Condition

Can be stored at +2C to +8C for 1 week. For long term storage, aliquot and store at -20C to -80C. Avoid repeated freezing and thawing cycles.

BACKGROUND

Description

CPPED1 belongs to the metallophosphoesterase superfamily. This protein binds 2 divalent metal cations and is transactivated by the large envelope protein of the hepatitis B virus (HBV). Recombinant human CPPED1 protein, fused to His-tag at N-terminus, was expressed in E. coli and purified by using conventional chromatography techniques.

Amino acid Sequence

<MGSSHHHHHH SGLVPRGSH MGS>MSAAEAG GVFHRARGRT LAAFPAEKES EWKGPFFYFIL GADPQFGLIK

Recombinant human CPED1 protein

Catalog Number: ATGP2148

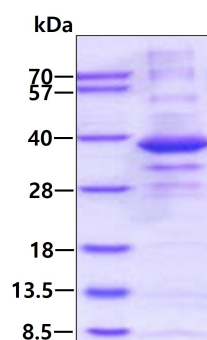
AWSTGDCDNG GDEWEQEIRL TEQAVQAINK LNPKPFFVL CGDLIHAMPG KPWRTEQTED LKRVLRAVDR AIPLVLVSGN
HDIGNTPAE TVEEFCRTWG DDYFSFWVGG VLFLVLNSQF YENPSKCPSL KQAQDQWLDE QLSIARQRHC QHAIVFQHIP
LFLESIDEDD DYYFNLSKST RKKLADKFIH AGVKVVFSGH YHRNAGGTYQ NLDMMVSSAI GCQLGRDPHG LRVVVVTAEK
IVHRYSLDE LSEKGIEDDL MDLIKKK

General References

Bai G.-Q., et al. (2005) World J. Gastroenterol. 11:3893-3898

DATA

SDS-PAGE



3ug by SDS-PAGE under reducing condition and visualized by coomassie blue stain.