

Recombinant human METTL21A protein

Catalog Number: ATGP2163

PRODUCT INFORMATION

Expression system

E.coli

Domain

93-218aa

UniProt No.

Q8WXB1

NCBI Accession No.

NP_660323

Alternative Names

Methyltransferase-like protein 21A, FAM119A, HCA557b

PRODUCT SPECIFICATION

Molecular Weight

17 kDa (149aa) confirmed by MALDI-TOF

Concentration

0.25mg/ml (determined by Bradford assay)

Formulation

Liquid in. 20mM Tris-HCl buffer (pH 8.0) containing 0.15M NaCl, 30% glycerol

Purity

> 85% by SDS-PAGE

Tag

His-Tag

Application

SDS-PAGE

Storage Condition

Can be stored at +2C to +8C for 1 week. For long term storage, aliquot and store at -20C to -80C. Avoid repeated freezing and thawing cycles.

BACKGROUND

Description

METTL21A belongs to the methyltransferase superfamily and is probable methyltransferase. Recombinant human METTL21A protein, fused to His-tag at N-terminus, was expressed in E. coli and purified by using conventional chromatography techniques.

Amino acid Sequence

MGSSHHHHHH SGLVPRGSH MGSTD RKVAL EFLKSNVQAN LPPHIQTKTV VKELTWGQNL GSFSPGEFDL ILGADIYYLE ETFTDLLQTL EHLCSNHSVI LLACRIRYER DNNFLAMLER QFTVRKVHYD PEKDVHIYEA QQRNQKEDL

Recombinant human METTL21A protein

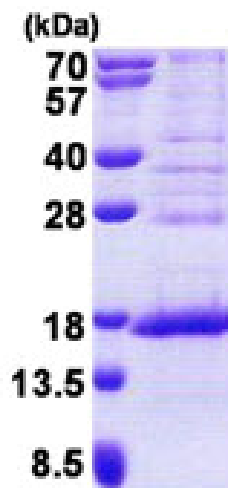
Catalog Number: ATGP2163

General References

Kagaya A, Shimada H, et al. (2011). *Proteome Sci.* 9(1):31.

DATA

SDS-PAGE



3ug by SDS-PAGE under reducing condition and visualized by coomassie blue stain.

15% SDS-PAGE (3ug)