

Recombinant human Musashi-2 protein

Catalog Number: ATGP2179

PRODUCT INFORMATION

Expression system

E.coli

Domain

1-328aa

UniProt No.

Q96DH6

NCBI Accession No.

NP_620412

Alternative Names

Musashi homolog 2, MSI2H

PRODUCT SPECIFICATION

Molecular Weight

37.6 kDa (351aa) confirmed by MALDI-TOF

Concentration

0.25mg/ml (determined by Bradford assay)

Formulation

Liquid in. 20mM Tris-HCl buffer (pH 8.0) containing 0.15M NaCl, 10% glycerol, 1mM DTT

Purity

> 90% by SDS-PAGE

Tag

His-Tag

Application

SDS-PAGE

Storage Condition

Can be stored at +2C to +8C for 1 week. For long term storage, aliquot and store at -20C to -80C. Avoid repeated freezing and thawing cycles.

BACKGROUND

Description

MSI2 is a protein containing two conserved tandem RNA recognition motifs. Similar proteins in other species function as RNA-binding proteins and play central roles in posttranscriptional gene regulation. Two transcript variants encoding distinct isoforms have been identified for this gene. Recombinant human MSI2 protein, fused to His-tag at N-terminus, was expressed in E. coli and purified by using conventional chromatography techniques.

Amino acid Sequence

<MGSSHHHHHH SGLVPRGSH MGS>MEANGSQ GTSGSANDSQ HDPGKMFIGN LSWQTSPDSL RDYFSKFGEI

Recombinant human Musashi-2 protein

Catalog Number: ATGP2179

RECMVMRDPT TKRSRGFGFV TFADPASVDK VLGQPHHELD SKTIDPKVAF PRRAQPKMVT RTKKIFVGGL SANTVVEDVK
QYFEQFGKVE DAMLMFDKTT NRHRGFGFVT FENEDVVEKV CEIHFHEINN KMVECKKAQP KEVMFPPGTR GRARGLPYTM
DAFMLGMGML GYPNFVATYG RGYPGFAPSY GYQFPGFPAA AYGPVAAAAV AAARGSGSNP ARPGGFPGAN SPGPVADLYG
PASQDSGVGN YISAASPQPG SGFGHGIAGP LIATAFTNGY H

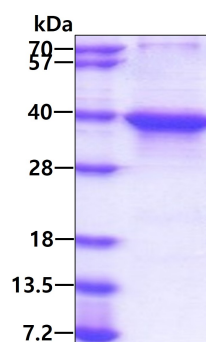
General References

Daub H., et al. (2008) Mol. Cell. 31:438-448

Gauci S., et al. (2009) Anal. Chem. 81:4493-4501

DATA

SDS-PAGE



3 μ g by SDS-PAGE under reducing condition and visualized by coomassie blue stain.