

# Recombinant human HLA-DOA protein

Catalog Number: ATGP2186

## PRODUCT INFORMATION

---

### Expression system

E.coli

### Domain

26-217aa

### UniProt No.

P06340

### NCBI Accession No.

NP\_002110

### Alternative Names

HLA class II histocompatibility antigen DO alpha chain, HLA class II histocompatibility antigen, DO alpha chain, HLA-DNA, HLA-DZA, HLADZ

## PRODUCT SPECIFICATION

---

### Molecular Weight

24.1 kDa (215aa)

### Concentration

1mg/ml (determined by Bradford assay)

### Formulation

Liquid in. 20mM Tris-HCl buffer (pH 8.0) containing 0.4M uREA, 10% glycerol

### Purity

> 90% by SDS-PAGE

### Tag

His-Tag

### Application

SDS-PAGE, Denatured

### Storage Condition

Can be stored at +2C to +8C for 1 week. For long term storage, aliquot and store at -20C to -80C. Avoid repeated freezing and thawing cycles.

## BACKGROUND

---

### Description

HLA-DOA belongs to the HLA class II alpha chain paralogues. HLA-DOA forms a heterodimer with HLA-DOB. The heterodimer, HLA-DO, is found in lysosomes in B cells and regulates HLA-DM-mediated peptide loading on MHC class II molecules. In comparison with classical HLA class II molecules, this gene exhibits very little sequence variation, especially at the protein level. Recombinant human HLA-DAO protein, fused to His-tag at N-terminus, was expressed in E. coli.

## Recombinant human HLA-DOA protein

Catalog Number: ATGP2186

### Amino acid Sequence

MGSSHHHHHH SSGLVPRGSH MGSTKADHMG SYGPAFYQSY GASGQFTEF DEEQLFSVDL KKSEAVWRLP  
EFGDFARFDP QGGLAGIAAI KAHLDILVER SNRSRAINVP PRVTVLPKSR VELGQPNILI CIVDNIFFPV INITWLRNGQ  
TVTEGVAQTS FYSQPDHLFR KFHYLPFVPS AEDVYDCQVE HWGLDAPLLR HWELQVPIPP PDAME

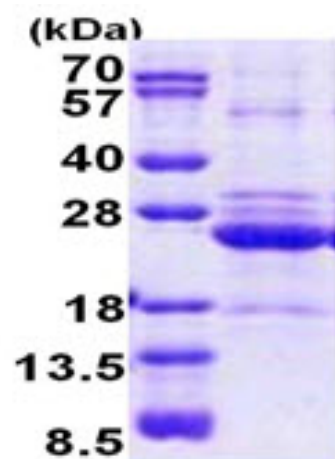
### General References

Yoon,T., et al. (2012) Proc. Natl. Acad. Sci. u.S.A. 109 (28), 11276-11281

Gieger,C., et al. (2012) Nature 480 (7376), 201-208

## DATA

### SDS-PAGE



3ug by SDS-PAGE under reducing condition and visualized by coomassie blue stain.

15% SDS-PAGE (3ug)