

Recombinant human RPL26 protein

Catalog Number: ATGP2189

PRODUCT INFORMATION

Expression system

E.coli

Domain

1-145aa

UniProt No.

P61254

NCBI Accession No.

NP_000978

Alternative Names

60S ribosomal protein L26, L26

PRODUCT SPECIFICATION

Molecular Weight

19.6 kDa (168aa) confirmed by MALDI-TOF

Concentration

0.25mg/ml (determined by Bradford assay)

Formulation

Liquid in. 20mM Tris-HCl buffer (pH 8.0) containing 0.15M NaCl, 40% glycerol, 1mM DTT

Purity

> 85% by SDS-PAGE

Tag

His-Tag

Application

SDS-PAGE

Storage Condition

Can be stored at +2C to +8C for 1 week. For long term storage, aliquot and store at -20C to -80C. Avoid repeated freezing and thawing cycles.

BACKGROUND

Description

Ribosomes, the organelles that catalyze protein synthesis, consist of a small 40S subunit and a large 60S subunit. Together these subunits are composed of 4 RNA species and approximately 80 structurally distinct proteins. RPL26 is a ribosomal protein that is a component of the 60S subunit. The protein belongs to the L24P family of ribosomal proteins. It is located in the cytoplasm. As is typical for genes encoding ribosomal proteins, there are multiple processed pseudogenes of this gene dispersed through the genome. Recombinant human RPL26 protein, fused to His-tag at N-terminus, was expressed in E. coli and purified by using conventional

Recombinant human RPL26 protein

Catalog Number: ATGP2189

chromatography techniques.

Amino acid Sequence

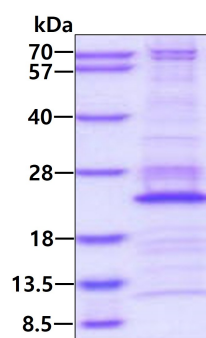
<MGSSHHHHHH SSGLVPRGSH MGS>MKFNPFV TSDRSKNRKR HFNAPSHIRR KIMSSPLSKE LRQKYNVRSM
PIRKDDEVQV VRGHYKGQOI GKVVQVYRKK YVIYIERVQR EKANGTTVHV GIHPSKVVIT RLKLDKDRKK ILERKAKSRQ
VGKEKGYKE ETIEKMQE

General References

Zaman GJ, et al. (1993). Nucleic Acids Res. 21(7):1673.
Ofir-Rosenfeld Y, Boggs K, et al. (2008). Mol Cell. 32(2):180-9.

DATA

SDS-PAGE



3ug by SDS-PAGE under reducing condition and visualized by coomassie blue stain.