

Recombinant human TRAPPC2L protein

Catalog Number: ATGP2195

PRODUCT INFORMATION

Expression system

E.coli

Domain

1-139aa

UniProt No.

Q9UL33

NCBI Accession No.

NP_001305454.1

Alternative Names

Trafficking protein particle complex subunit 2-like protein

PRODUCT SPECIFICATION

Molecular Weight

18.4 kDa (162aa) confirmed by MALDI-TOF

Concentration

0.5mg/ml (determined by Bradford assay)

Formulation

Liquid in. 20mM Tris-HCl buffer (pH 8.0) containing 0.2M NaCl, 50% glycerol, 2mM DTT

Purity

> 90% by SDS-PAGE

Tag

His-Tag

Application

SDS-PAGE

Storage Condition

Can be stored at +2C to +8C for 1 week. For long term storage, aliquot and store at -20C to -80C. Avoid repeated freezing and thawing cycles.

BACKGROUND

Description

TRAPPC2L may play a role in vesicular transport from endoplasmic reticulum to Golgi. This protein belongs to the TRAPP small subunits family and is expressed in testis, liver, bladder, lung, spleen and brain, several cell lines and primary chondrocytes cell line. Recombinant human TRAPPC2L protein, fused to His-tag at N-terminus, was expressed in E. coli and purified by using conventional chromatography techniques.

Amino acid Sequence

<MGSSHHHHHH SGLVPRGSH MGS>MAVCI AV IAKENYPLYI RSTPTENELK FHYMVHTSLD VVDEKISAMG

Recombinant human TRAPPC2L protein

Catalog Number: ATGP2195

KALVDQRELY LGLLYPTEDY KVYGYVTNSK VKFVMVVDSS NTALRDNEIR SMFRKLHNSY TDVMCNPFFYN PGDRIQSRAF
DNMVTSMMIQ VC

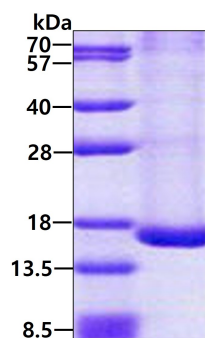
General References

Scrivens P.J., et al. (2009) *Traffic*. 10:724-736

Scrivens P.J., et al. (2011) *Mol. Biol. Cell*. 22:2083-2093

DATA

SDS-PAGE



3 μ g by SDS-PAGE under reducing condition and visualized by coomassie blue stain.