

Recombinant human STBD1 protein

Catalog Number: ATGP2198

PRODUCT INFORMATION

Expression system

E.coli

Domain

24-358aa

UniProt No.

O95210

NCBI Accession No.

NP_003934

Alternative Names

Starch-binding domain-containing protein 1, GENEX3414, GENX-3414

PRODUCT SPECIFICATION

Molecular Weight

39.1 kDa (358aa) confirmed by MALDI-TOF

Concentration

0.5mg/ml (determined by Bradford assay)

Formulation

Liquid in. 20mM Tris-HCl buffer (pH 8.0) containing 0.15M NaCl, 10% glycerol, 1mM DTT

Purity

> 90% by SDS-PAGE

Tag

His-Tag

Application

SDS-PAGE

Storage Condition

Can be stored at +2C to +8C for 1 week. For long term storage, aliquot and store at -20C to -80C. Avoid repeated freezing and thawing cycles.

BACKGROUND

Description

STBD1 contains 1 CBM20 (carbohydrate binding type-20) domain and may have the capability to bind to carbohydrates. This protein is expressed at high level in skeletal and cardiac muscles. Recombinant human STBD1 protein, fused to His-tag at N-terminus, was expressed in E. coli and purified by using conventional chromatography techniques.

Amino acid Sequence

MGSSHHHHHHH SGLVPRGSH MGSRRGGPGDT GKDGDAEQEK DAPLGGAAIP GGHQSGSSGL SPGPSGQELV

Recombinant human STBD1 protein

Catalog Number: ATGP2198

TKPEHLQESN GHLISKTKDL GKLQAASWRL QNPSREVCDN SREHVPSGQF PDTEAPATSE TSNSRSYSEV SRNESLESPM
GEWGFQKGQE ISAKAATCFA EKLPSNLLK NRAKEEMSLS DLNSQDRVDH EEWEMVPRHS SWGDVGVGGS
LKAPVLNLNQ GMDNGRSTLV EARGQQVHGK MERVAVMPAG SQQVSVRFQV HYVTSTDVQF IAVTGDHECL
GRWNTYIPLH YNKDGFWSHS IFLPADTVVE WKFVLVENG VTRWEECSNR FLETGHEDKV VHAWWGIH

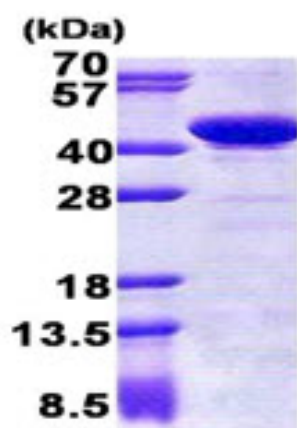
General References

Janecek S., et al. (2002) *Bioinformatics*. 18:1534-1537

Bouju S., et al. (1998) *Biochem. J.* 335:549-556

DATA

SDS-PAGE



3ug by SDS-PAGE under reducing condition and visualized by coomassie blue stain.

15% SDS-PAGE (3ug)