

Recombinant human RPL22 protein

Catalog Number: ATGP2202

PRODUCT INFORMATION

Expression system

E.coli

Domain

1-128aa

UniProt No.

P35268

NCBI Accession No.

NP_000974

Alternative Names

60S ribosomal protein L22 proprotein, 60S ribosomal protein L22 proprotein, EAP, HBP15, HBP15/L22, L22

PRODUCT SPECIFICATION

Molecular Weight

17 kDa (151aa) confirmed by MALDI-TOF

Concentration

0.25mg/ml (determined by Bradford assay)

Formulation

Liquid in. 20mM Tris-HCl buffer (pH 8.0) containing 0.15M NaCl, 20% glycerol, 1mM DTT

Purity

> 85% by SDS-PAGE

Tag

His-Tag

Application

SDS-PAGE

Storage Condition

Can be stored at +2C to +8C for 1 week. For long term storage, aliquot and store at -20C to -80C. Avoid repeated freezing and thawing cycles.

BACKGROUND

Description

RPL22 is a cytoplasmic ribosomal protein that is a component of the 60S subunit. The protein belongs to the L22E family of ribosomal proteins. Its initiating methionine residue is post-translationally removed. The protein can bind specifically to Epstein-Barr virus-encoded RNAs (EBERs) 1 and 2. Recombinant human RPL22 protein, fused to His-tag at N-terminus, was expressed in E. coli and purified by using conventional chromatography techniques.

Recombinant human RPL22 protein

Catalog Number: ATGP2202

Amino acid Sequence

MGSSHHHHHHH SSSLVPRGSH MGSMAPVKKL VVKGGKKKKQ VLKFTLDCTH PVEDGIMDAA NFEQFLQERI KVNGKAGNLG
GGVVTIERSK SKITVTSEVP FSKRYLKYLT KKYLLKNNLR DWLRVVANSK ESYELRYFQI NQDEEEEEDE D

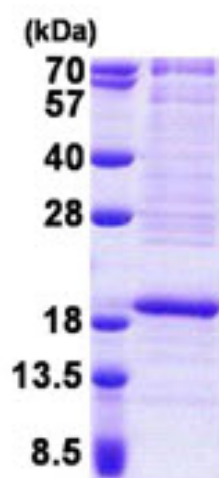
General References

Fok V, Mitton-Fry RM, et al. (2006). RNA. 12(5):872-82.

Shu-Nu C, Lin CH, et al. (2000). FEBS Lett. 484(1):22-8.

DATA

SDS-PAGE



3ug by SDS-PAGE under reducing condition and visualized by coomassie blue stain.

15% SDS-PAGE (3ug)