

# Recombinant human CNP protein

Catalog Number: ATGP2205

## PRODUCT INFORMATION

---

### Expression system

E.coli

### Domain

24-126aa

### UniProt No.

P23582

### NCBI Accession No.

NP\_077720.1

### Alternative Names

C-type natriuretic peptide, C-type natriuretic peptide, CNP, CNP2

## PRODUCT SPECIFICATION

---

### Molecular Weight

13.2 kDa (126aa) confirmed by MALDI-TOF

### Concentration

0.25mg/ml (determined by BCA assay)

### Formulation

Liquid in. 20mM Tris-HCl buffer (pH 8.0) containing 0.15M NaCl, 10% glycerol,

### Purity

> 85% by SDS-PAGE

### Tag

His-Tag

### Application

SDS-PAGE

### Storage Condition

Can be stored at +2C to +8C for 1 week. For long term storage, aliquot and store at -20C to -80C. Avoid repeated freezing and thawing cycles.

## BACKGROUND

---

### Description

NPPC is proteolytically processed to form a secreted hormone of the natriuretic peptide family. The hormone regulates the growth and differentiation of cartilaginous growth plate chondrocytes and may also be vasoactive and natriuretic. Recombinant human NPPC protein, fused to His-tag at N-terminus, was expressed in E. coli and purified by using conventional chromatography techniques.

### Amino acid Sequence

<MGSSHHHHHH SGLVPRGSH MGS>KPGAPPK VPRTPPAEEL AEPQAAGGGQ KKGDKAPGGG GANLKGDRSR

# Recombinant human CNP protein

Catalog Number: ATGP2205

LLRDLRVDTK SRAAWARLLQ EHPNARKYKG ANKKGLSKGC FGLKLDRIQS MSGGLGC

## General References

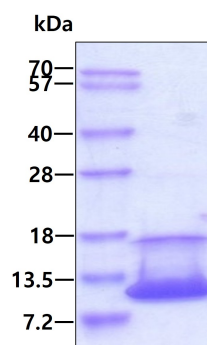
Thompson, I.R., et al. (2012) *Endocr. Relat. Cancer* 19 (4), 497-508

Kuehnl, A., et al. (2012) *Eur J Vasc Endovasc Surg* 43 (6), 649-654

## DATA

---

### SDS-PAGE



3 $\mu$ g by SDS-PAGE under reducing condition and visualized by coomassie blue stain.