

# Recombinant human RPS16 protein

Catalog Number: ATGP2211

## PRODUCT INFORMATION

---

### Expression system

E.coli

### Domain

1-146aa

### UniProt No.

P62249

### NCBI Accession No.

NP\_001011

### Alternative Names

40S ribosomal protein S16, S16

## PRODUCT SPECIFICATION

---

### Molecular Weight

18.8 kDa (169aa)

### Concentration

0.5mg/ml (determined by Bradford assay)

### Formulation

Liquid in. 20mM Tris-HCl buffer (pH 8.0) containing 0.4M urea, 10% glycerol

### Purity

> 90% by SDS-PAGE

### Tag

His-Tag

### Application

SDS-PAGE, Denatured

### Storage Condition

Can be stored at +2C to +8C for 1 week. For long term storage, aliquot and store at -20C to -80C. Avoid repeated freezing and thawing cycles.

## BACKGROUND

---

### Description

Ribosomes, the organelles that catalyze protein synthesis, consist of a small 40S subunit and a large 60S subunit. Together these subunits are composed of 4 RNA species and approximately 80 structurally distinct proteins. RPS16 is a ribosomal protein that is a component of the 40S subunit. The protein belongs to the S9P family of ribosomal proteins. It is located in the cytoplasm. As is typical for genes encoding ribosomal proteins, there are multiple processed pseudogenes of this gene dispersed through the genome. Recombinant human RPS16 protein, fused to His-tag at N-terminus, was expressed in E. coli.

# Recombinant human RPS16 protein

Catalog Number: ATGP2211

## Amino acid Sequence

<MGSSHHHHHH SSGLVPRGSH MGS>MPSKGPL QSVQVFGRRK TATAVAHCKR GNGLIKVNGR PLEMIEPRTL  
QYKLLPEVLL LGKERFAGVD IRVRVKGGGH VAQIYAIRQS ISKALVAYYQ KYVDEASKKE IKDILIQYDR TLLVADPRRC  
ESKKFGGPGA RARYQKSYR

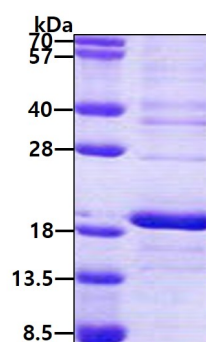
## General References

Batra SK, Metzgar RS, et al. (1991). J Biol Chem. 266(11):6830-3.

## DATA

---

### SDS-PAGE



3ug by SDS-PAGE under reducing condition and visualized by coomassie blue stain.