

Recombinant human MRPS25 protein

Catalog Number: ATGP2216

PRODUCT INFORMATION

Expression system

E.coli

Domain

1-173aa

UniProt No.

P82663

NCBI Accession No.

NP_071942

Alternative Names

28S ribosomal protein S25 mitochondrial, 28S ribosomal protein S25, mitochondrial, mitochondrial ribosomal protein S25, MRP-S25, RPMS25

PRODUCT SPECIFICATION

Molecular Weight

22.5 kDa (196aa)

Concentration

0.5mg/ml (determined by BCA assay)

Formulation

Liquid in. 20mM Tris-HCl buffer (pH 8.0) containing, 10% glycerol, 0.4M urea

Purity

> 85% by SDS-PAGE

Tag

His-Tag

Application

SDS-PAGE, Denatured

Storage Condition

Can be stored at +2C to +8C for 1 week. For long term storage, aliquot and store at -20C to -80C. Avoid repeated freezing and thawing cycles.

BACKGROUND

Description

MRPS25 is a 28S subunit protein that belongs to the ribosomal protein S5P family. A pseudogene corresponding to this gene is found on chromosome 4. Recombinant human MRPS25 protein, fused to His-tag at N-terminus, was expressed in E. coli.

Amino acid Sequence

<MGSSHHHHHH SGLVPRGSH MGS>MPMKGRF PIRRTLQYLS QGNVVKDSV KVMTVNYNTH GELGEGARKF

Recombinant human MRPS25 protein

Catalog Number: ATGP2216

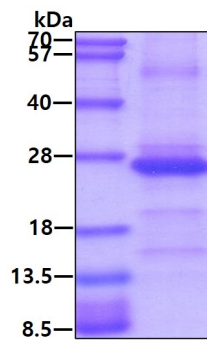
VFFNIPQIQY KNPWVQIMMF KNMTPSPFLR FYLDSGEQVL VDVETKSNKE IMEHIRKILG KNEETLREEE EEKKQLSHPA
NFGPRKYCLR ECICEVEGQV PCPSLVPLPK EMRGKYKAAL KADAQD

General References

Cavdar Koc E, Burkhart W, et al. (May 2001) J Biol Chem 276 (22): 19363-74.

DATA

SDS-PAGE



3ug by SDS-PAGE under reducing condition and visualized by coomassie blue stain.