

Recombinant human Activin C protein

Catalog Number: ATGP2223

PRODUCT INFORMATION

Expression system

E.coli

Domain

237-352aa

UniProt No.

P55103

NCBI Accession No.

NP_005529

Alternative Names

Inhibin beta C chain, IHBC

PRODUCT SPECIFICATION

Molecular Weight

14.9 kDa (139aa) confirmed by MALDI-TOF

Concentration

0.5mg/ml (determined by Bradford assay)

Formulation

Liquid in. 20mM Tris-HCl buffer (pH 8.0) containing 0.15M NaCl, 10% glycerol, 1mM DTT

Purity

> 85% by SDS-PAGE

Tag

His-Tag

Application

SDS-PAGE

Storage Condition

Can be stored at +2C to +8C for 1 week. For long term storage, aliquot and store at -20C to -80C. Avoid repeated freezing and thawing cycles.

BACKGROUND

Description

INHBC is the beta C chain of inhibin, a member of the TGF-beta superfamily. This subunit forms heterodimers with beta A and beta B subunits. Inhibins and activins, also members of the TGF-beta superfamily, are hormones with opposing actions and are involved in hypothalamic, pituitary, and gonadal hormone secretion, as well as growth and differentiation of various cell types. Recombinant human INHBC protein, fused to His-tag at N-terminus, was expressed in E. coli and purified by using conventional chromatography techniques.

Recombinant human Activin C protein

Catalog Number: ATGP2223

Amino acid Sequence

MGSSHHHHHH SSGLVPRGSH MSGGIDCQGG SRMCCRQEFF VDFREIGWHD WIIQPEGYAM NFCIGQCPLH IAGMPGIAAS
FHTAVLNLLK ANTAAGTTGG GSCCVPTARR PLSLLYYDRD SNIVKTDIPD MVVEACGCS

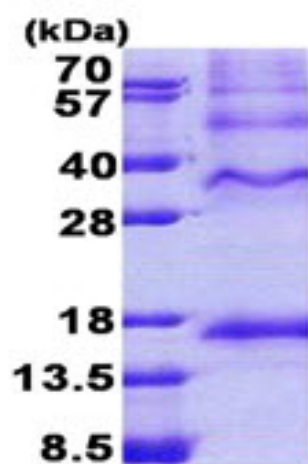
General References

Hoetten G., et al. (1995) *Biochem. Biophys. Res. Commun.* 206:608-613

Thomas T.Z., et al. (1998) *Prostate.* 34:34-43

DATA

SDS-PAGE



3ug by SDS-PAGE under reducing condition and visualized by coomassie blue stain.

15% SDS-PAGE (3ug)