

Recombinant human EMC2 protein

Catalog Number: ATGP2227

PRODUCT INFORMATION

Expression system

E.coli

Domain

1-297aa

UniProt No.

Q15006

NCBI Accession No.

NP_055488

Alternative Names

ER membrane protein complex subunit 2, KIAA0103; TTC35

PRODUCT SPECIFICATION

Molecular Weight

37.2 kDa (320aa) confirmed by MALDI-TOF

Concentration

0.5mg/ml (determined by Bradford assay)

Formulation

Liquid in. 20mM Tris-HCl buffer (pH 8.0) containing 0.15M NaCl, 40% glycerol, 2mM DTT

Purity

> 90% by SDS-PAGE

Tag

His-Tag

Application

SDS-PAGE

Storage Condition

Can be stored at +2C to +8C for 1 week. For long term storage, aliquot and store at -20C to -80C. Avoid repeated freezing and thawing cycles.

BACKGROUND

Description

EMC2 is a component of the ER membrane protein complex. The protein belongs to the EMC2 family and contains 3 TPR repeats. Recombinant human EMC2 protein, fused to His-tag at N-terminus, was expressed in E. coli and purified by using conventional chromatography techniques.

Amino acid Sequence

MGSSHHHHHH SGLVPRGSH MGSMAKVSEL YDVTWEEMRD KMRKWREENS RNSEQIVEVG EELINEYASK LGDDIWIYE QVMIAALDYG RDDLALFCLQ ELRRQFPGSH RVKRLTGMR F EAMERYDDAI QLYDRILQED PTNTAARKRK IAIRKAQGKN

Recombinant human EMC2 protein

Catalog Number: ATGP2227

VEAIRELNEY LEQFVGDQEA WHELAEIYIN EHDYAKAAFC LEELMMTNPH NHLYCQQYAE VKYTQGGLN LELSRKYFAQ
ALKLNNRNMR ALFGLYMSAS HIASNPKASA KTKKDNMKYA SWAASQINRA YQFAGRSKKE TKYSLKAVED MLETLOITQS

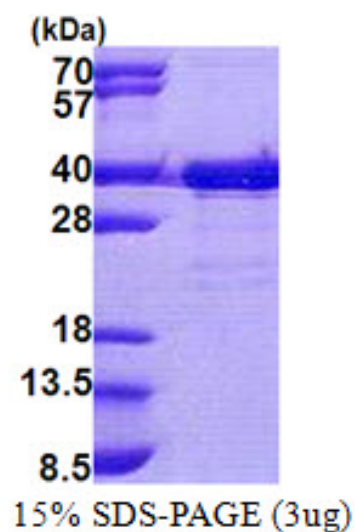
General References

Nagase T., et al. (1995) DNA Res. 2:37-43

Christianson J.C., et al. (2012) Cell Biol. 14:93-105

DATA

SDS-PAGE



3ug by SDS-PAGE under reducing condition and visualized by coomassie blue stain.