

# Recombinant human IL-38/IL-1F10 protein

Catalog Number: ATGP2240

## PRODUCT INFORMATION

---

### Expression system

E.coli

### Domain

1-152aa

### UniProt No.

Q8WWZ1

### NCBI Accession No.

NP\_115945.3

### Alternative Names

Interleukin 1 family member 10, Family of interleukin 1-theta, FIL1 theta, Interleukin-1 HY2, IL-1HY2, Interleukin-1 theta, IL-1 theta, Interleukin-38, IL-38, FIL1T, Interleukin-1 receptor antagonist FKSG75

## PRODUCT SPECIFICATION

---

### Molecular Weight

19.1 kDa (172aa) confirmed by MALDI-TOF

### Concentration

1mg/ml (determined by Bradford assay)

### Formulation

Liquid in. 20mM Tris-HCl buffer (pH 8.0) containing 0.15M NaCl, 20% glycerol, 1mM DTT

### Purity

> 90% by SDS-PAGE

### Tag

His-Tag

### Application

SDS-PAGE

### Storage Condition

Can be stored at +2C to +8C for 1 week. For long term storage, aliquot and store at -20C to -80C. Avoid repeated freezing and thawing cycles.

## BACKGROUND

---

### Description

IL1F10 is a member of the interleukin 1 cytokine family. This gene and eight other interleukin 1 family genes form a cytokine gene cluster on chromosome 2. This cytokine is thought to participate in a network of interleukin 1 family members to regulate adapted and innate immune responses. Two alternatively spliced transcript variants encoding the same protein have been reported. Recombinant human IL1F10 protein, fused to His-tag at N-terminus, was expressed in E. coli and purified by using conventional chromatography techniques.

# Recombinant human IL-38/IL-1F10 protein

Catalog Number: ATGP2240

## Amino acid Sequence

<MGSSHHHHHH SSGLVPRGSH> MCSLPMARYY IIKYADQKAL YTRDGQLLVG DPVADNCCAE KICTLPNRGL  
DRTKVPIFLG IQGGSRLCLAC VETEEGPSLQ LEDVNIIEELY KGGEEATRFT FFQSSSGSAF RLEAAAWPGW FLCGPAEPQQ  
PVQLTKESEP SARTKFYFEQ SW

## General References

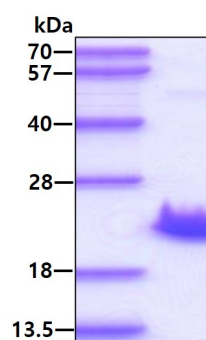
Taylor,S.L., et al. (2002) Genomics 79 (5), 726-733

Nicklin,M.J., et al. (2002) Genomics 79 (5), 718-725

## DATA

---

### SDS-PAGE



3ug by SDS-PAGE under reducing condition and visualized by coomassie blue stain.