

# Recombinant human DESI1 protein

Catalog Number: ATGP2242

## PRODUCT INFORMATION

---

### Expression system

E.coli

### Domain

1-168aa

### UniProt No.

Q6ICB0

### NCBI Accession No.

NP\_056519

### Alternative Names

Desumoylating isopeptidase 1, D15Wsu75e, DeSI-1, DESI2, DJ347H13.4, FAM152B, PPPDE2

## PRODUCT SPECIFICATION

---

### Molecular Weight

20.7 kDa (191aa) confirmed by MALDI-TOF

### Concentration

0.25mg/ml (determined by Bradford assay)

### Formulation

Liquid in. 20mM Tris-HCl buffer (pH 8.0) containing 0.1M NaCl, 10% glycerol, 1mM DTT

### Purity

> 85% by SDS-PAGE

### Tag

His-Tag

### Application

SDS-PAGE

### Storage Condition

Can be stored at +2C to +8C for 1 week. For long term storage, aliquot and store at -20C to -80C. Avoid repeated freezing and thawing cycles.

## BACKGROUND

---

### Description

DESI1 belongs to the DeSI family and contains 1 PPPDE peptidase domain. This protein is a protease which deconjugates SuMO1, SuMO2 and SuMO3 from some substrate proteins and has isopeptidase but not SuMO-processing activity. DESI1 desumoylates ZBTB46. Recombinant human DESI1 protein, fused to His-tag at N-terminus, was expressed in E. coli and purified by using conventional chromatography techniques.

### Amino acid Sequence

MGSSHHHHHH SGLVPRGSH MGSMEPPNLY PVKLYVYDLS KGLARRLSPI MLGKQLEGIW HTSIVVHKDE FFGSGGSISS

# Recombinant human DESI1 protein

Catalog Number: ATGP2242

CPPGGTLLGP PDSVVDVGST EVTEEIFLEY LSSLGESLFR GEAYNLFEHN CNTFSNEVAQ FLTGRKIPSY ITDLPSEVLS  
TPFGQALRPL LDSIQIQQPG GSSVGRPNGQ S

## General References

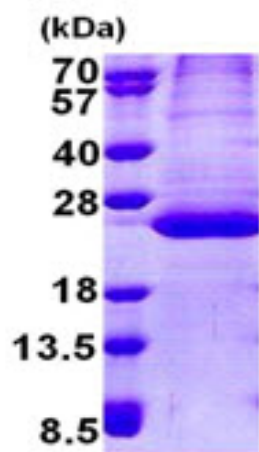
Briegel W., et al. (2004) Psychother. 32:107-115

Gothelf D., et al. (2008) Dev Disabil res Rev. 14:59-68

## DATA

---

### SDS-PAGE



3ug by SDS-PAGE under reducing condition and visualized by coomassie blue stain.

15% SDS-PAGE (3ug)