

Recombinant human CENPM protein

Catalog Number: ATGP2243

PRODUCT INFORMATION

Expression system

E.coli

Domain

1-180aa

UniProt No.

Q9NSP4

NCBI Accession No.

NP_076958

Alternative Names

Centromere protein M isoform a, bK250D10.2, C22orf18, CENP-M, PANE1

PRODUCT SPECIFICATION

Molecular Weight

22 kDa (203aa) confirmed by MALDI-TOF

Concentration

0.25mg/ml (determined by Bradford assay)

Formulation

Liquid in. 20mM Tris-HCl buffer (pH 8.0) containing 0.15M NaCl, 30% glycerol, 1mM DTT

Purity

> 85% by SDS-PAGE

Tag

His-Tag

Application

SDS-PAGE

Storage Condition

Can be stored at +2C to +8C for 1 week. For long term storage, aliquot and store at -20C to -80C. Avoid repeated freezing and thawing cycles.

BACKGROUND

Description

The centromere is a specialized chromatin domain, present throughout the cell cycle, that acts as a platform on which the transient assembly of the kinetochore occurs during mitosis. All active centromeres are characterized by the presence of long arrays nucleosomes in which CENPA replaces histone H3. CENPM is an additional factor required for centromere assembly. Recombinant human CENPM protein, fused to His-tag at N-terminus, was expressed in E. coli and purified by using conventional chromatography techniques.

Recombinant human CENPM protein

Catalog Number: ATGP2243

Amino acid Sequence

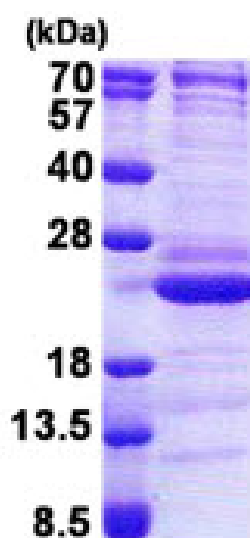
MGSSHHHHHH SSSLVPRGSH MGSMSVLRPL DKLPGLNTAT ILLVGTEDAL LQQLADSMK EDCASELKVH LAKSLPLPSS
VNRPRIDLIV FVVNLHSKYS LQNTTEESLRH VDASFFLGKV CFLATGAGRE SHCSIHRHTV VKLAHTYQSP LLYCDLEVEG
FRATMAQRLV RVLQICAGHV PGVSALNLLS LRSSEGPSL EDL

General References

Brickner AG, Evans AM, et al. (2006). *Blood*. 107(9):3779-86.
Bierie B, Edwin M, et al. (2004). *Gene Expr Patterns*. 4(4):389-95.

DATA

SDS-PAGE



3ug by SDS-PAGE under reducing condition and visualized by coomassie blue stain.

15% SDS-PAGE (3ug)