

Recombinant human Trappin-2/Elafin protein

Catalog Number: ATGP2244

PRODUCT INFORMATION

Expression system

E.coli

Domain

23-117aa

UniProt No.

P19957

NCBI Accession No.

NP_002629

Alternative Names

Elafin preproprotein, Cementoin, ESI, SKALP, WAP3, WFDC14

PRODUCT SPECIFICATION

Molecular Weight

12 kDa (118aa) confirmed by MALDI-TOF

Concentration

0.25mg/ml (determined by Bradford assay)

Formulation

Liquid in. 20mM Tris-HCl buffer (pH 8.0) containing 0.15M NaCl, 10% glycerol, 1mM DTT

Purity

> 80% by SDS-PAGE

Tag

His-Tag

Application

SDS-PAGE

Storage Condition

Can be stored at +2C to +8C for 1 week. For long term storage, aliquot and store at -20C to -80C. Avoid repeated freezing and thawing cycles.

BACKGROUND

Description

PI3 is an elastase-specific protease inhibitor, which contains a WAP-type four-disulfide core (WFDC) domain, and is thus a member of the WFDC domain family. Most WFDC gene members are localized to chromosome 20q12-q13 in two clusters: centromeric and telomeric. PI3 belongs to the centromeric cluster. Recombinant human PI3 protein, fused to His-tag at N-terminus, was expressed in E. coli and purified by using conventional chromatography techniques.

Recombinant human Trappin-2/Elafin protein

Catalog Number: ATGP2244

Amino acid Sequence

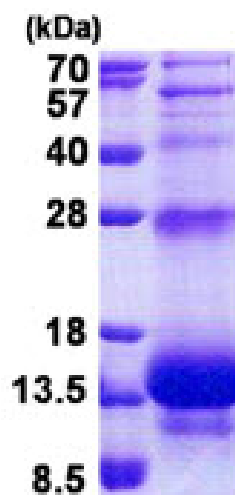
MGSSHHHHHH SSGLVPRGSH MGSVAVTGPV KGQDTVKGRV PFNGQDPVKG QVSVKGQDKV KAEQPVKGPV
STKPGSCPII LIRCAMLNPP NRCLKDTDCP GIKKCCEGSC GMACFVPQ

General References

Sumi Y, Inoue N, et al. (2002). *Atherosclerosis*. 160(1):31-9.
Kuijpers AL, Pfundt R, et al. (1998). *Clin Genet*. 54(1):96-101.

DATA

SDS-PAGE



3ug by SDS-PAGE under reducing condition and visualized by coomassie blue stain.

15% SDS-PAGE (3ug)