

Recombinant human PSG5 protein

Catalog Number: ATGP2250

PRODUCT INFORMATION

Expression system

E.coli

Domain

35-335aa

UniProt No.

Q15238

NCBI Accession No.

NP_001123486

Alternative Names

Pregnancy-specific beta-1-glycoprotein 5, FL-NCA-3, PSG

PRODUCT SPECIFICATION

Molecular Weight

36.4 kDa (324aa)

Concentration

0.5mg/ml (determined by Bradford assay)

Formulation

Liquid in. 20mM Tris-HCl buffer (pH 8.0) containing 1M urea, 10% glycerol

Purity

> 80% by SDS-PAGE

Tag

His-Tag

Application

SDS-PAGE, Denatured

Storage Condition

Can be stored at +2C to +8C for 1 week. For long term storage, aliquot and store at -20C to -80C. Avoid repeated freezing and thawing cycles.

BACKGROUND

Description

PSG5 is a member of the PSG family, a group of closely related secreted glycoproteins that are highly expressed in fetal placental syncytiotrophoblast cells. PSGs become detectable in serum during the first two to three weeks of pregnancy and increase as the pregnancy progresses, eventually representing the most abundant fetal protein in the maternal blood at term. PSG5 function to stimulate secretion of TH2-type cytokines from monocytes, and they may also modulate the maternal immune system during pregnancy, thereby protecting the semi-allogenic fetus from rejection. Recombinant human PSG5 protein, fused to His-tag at N-terminus, was

Recombinant human PSG5 protein

Catalog Number: ATGP2250

expressed in E. coli.

Amino acid Sequence

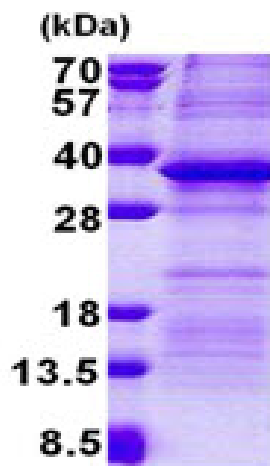
MGSSHHHHHHH SGLVPRGSH MGSQVTIEAL PPKVSEGKDV LLLVHNL PQN LAGYIWKYKQ LMDLYHYITS YVVDGQINIY
GPAYTGRET V YSNASLLIQN VTREDAGSYT LHIKRGDRT RGVTGYFTFN LYLKLPKPYI TINNSKPEN KDVLAFTCEP
KSENYTYIWW LNGQSLPVSP RVKRPIENRI LILPSVTRNE TGPYECEIRD RDGGMRS DPV TLNVLYGPD L PSYIPSFTYY
RSGENLYLSC FAESNPPAEY FWTINGKFQQ SGQKLSIPQI TTKHRGLYTC SVRNSATGKE SSKSMTVEVS APSGIGRLPL LNPI

General References

Chan W Y., et al. (1991) Mol Cell Biochem.106:161-170
Panzetta Dutari G M., et al. (2000) Biochem J. 2:511-519.

DATA

SDS-PAGE



3ug by SDS-PAGE under reducing condition and visualized by coomassie blue stain.

15% SDS-PAGE (3ug)