

# Recombinant human Tmp21/p23 protein

Catalog Number: ATGP2253

## PRODUCT INFORMATION

---

### Expression system

E.coli

### Domain

32-185aa

### UniProt No.

P49755

### NCBI Accession No.

NP\_006818

### Alternative Names

Transmembrane emp24 domain-containing protein 10, p23, P24(DELTA), S31I125, S31III125, Tmp-21-I, TMP21

## PRODUCT SPECIFICATION

---

### Molecular Weight

20 kDa (177aa) confirmed by MALDI-TOF

### Concentration

0.25mg/ml (determined by Bradford assay)

### Formulation

Liquid in. 20mM Tris-HCl buffer (pH 8.0) containing 0.15M NaCl, 30% glycerol

### Purity

> 85% by SDS-PAGE

### Tag

His-Tag

### Application

SDS-PAGE

### Storage Condition

Can be stored at +2C to +8C for 1 week. For long term storage, aliquot and store at -20C to -80C. Avoid repeated freezing and thawing cycles.

## BACKGROUND

---

### Description

TMED10 is a member of the EMP24/GP25L/p24 family and a protein with a GOLD domain. This type I membrane protein is localized to the plasma membrane and golgi cisternae and is involved in vesicular protein trafficking. The protein is also a member of a heteromeric secretase complex and regulates the complex's gamma-secretase activity without affecting its epsilon-secretase activity. Mutations in this gene have been associated with early-onset familial Alzheimer's disease. This gene has a pseudogene on chromosome 8. Recombinant human TMED10 protein, fused to His-tag at N-terminus, was expressed in E. coli and purified by using conventional

# Recombinant human Tmp21/p23 protein

Catalog Number: ATGP2253

chromatography techniques.

## Amino acid Sequence

MGSSHHHHHHH SGLVPRGSH MGSISFHLPI NSRKCLREEI HKDLLVTGAY EISDQSGGAG GLRSHLKITD SAGHILYSKE  
DATKGKFAFT TEDYDMFEVC FESKGTGRIP DQLVILDMKH GVEAKNYEEI AKVEKLPLE VELRRLEDLS ESIVNDFAYM  
KKREEEMRDT NESTNTR

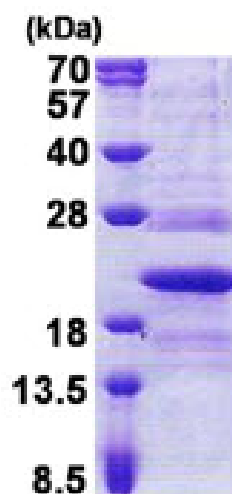
## General References

Chen F, Hasegawa H, et al. (2006). Nature. 440(7088):1208-12.

Wang H, et al. (2002). J Biol Chem. 277(6):4541-50.

## DATA

### SDS-PAGE



3ug by SDS-PAGE under reducing condition and visualized by coomassie blue stain.

15% SDS-PAGE (3ug)