

# Recombinant human mesotrypsin/PRSS3 protein

Catalog Number: ATGP2255

## PRODUCT INFORMATION

---

### Expression system

E.coli

### Domain

81-304aa

### UniProt No.

P35030

### NCBI Accession No.

NP\_031369.2

### Alternative Names

Brain trypsinogen, Mesotrypsin, Mesotrypsinogen, Serine protease 3, Serine protease 4, Trypsin-3, Trypsin III, Trypsin IV, PRSS4, TRY3, TRY4

## PRODUCT SPECIFICATION

---

### Molecular Weight

26 kDa (247aa)

### Concentration

1mg/ml (determined by Bradford assay)

### Formulation

Liquid in. 20mM Tris-HCl buffer (pH 8.0) containing 0.4M urea, 10% glycerol

### Purity

> 90% by SDS-PAGE

### Tag

His-Tag

### Application

SDS-PAGE, Denatured

### Storage Condition

Can be stored at +2C to +8C for 1 week. For long term storage, aliquot and store at -20C to -80C. Avoid repeated freezing and thawing cycles.

## BACKGROUND

---

### Description

PRSS3 is a trypsinogen, which is a member of the trypsin family of serine proteases. This enzyme is expressed in the brain and pancreas and is resistant to common trypsin inhibitors. It is active on peptide linkages involving the carboxyl group of lysine or arginine. This gene is localized to the locus of T cell receptor beta variable orphans on chromosome 9. Four transcript variants encoding different isoforms have been described for this gene. Recombinant human PRSS3 protein, fused to His-tag at N-terminus, was expressed in E. coli.

# Recombinant human mesotrypsin/PRSS3 protein

Catalog Number: ATGP2255

## Amino acid Sequence

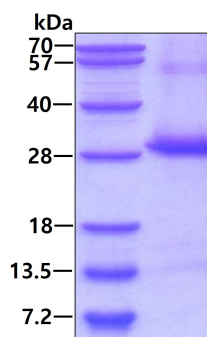
<MGSSHHHHHH SSGLVPRGSH MGS>IVGGYTC EENSLPYQVS LNSGSHFCGG SLISEQWVVS AAHCYKTRIQ  
VRLGEHNIKV LEGNEQFINA AKIIRHPKYN RDTLDNDIML IKLSSPAVIN ARVSTISLPT APPAAGTECL ISGWGNTLSF  
GADYPDELKC LDAPVLTQAE CKASYPGKIT NSMFCVGFLE GGDSCQRDS GGPVVCNGQL QGVVSWGHC  
AWKNRPGVYT KVYNYVDWIK DTIAANS

## General References

Masson E, Le Marechal C, et al. (2008). *Pancreas*. 37(2):227-8.  
Jiang G, Cao F, et al. (2010). *Gut*. 59(11):1535-44.

## DATA

### SDS-PAGE



3 $\mu$ g by SDS-PAGE under reducing condition and visualized by coomassie blue stain.