

Recombinant human Cathepsin F protein

Catalog Number: ATGP2259

PRODUCT INFORMATION

Expression system

E.coli

Domain

271-484aa

UniProt No.

Q9UBX1

NCBI Accession No.

NP_003784

Alternative Names

CTSF, Cathepsin F, CATSF, CLN13

PRODUCT SPECIFICATION

Molecular Weight

26 kDa (237aa)

Concentration

1mg/ml (determined by Bradford assay)

Formulation

Liquid in. 20mM Tris-HCl buffer (pH 8.0) containing 0.4M urea, 10% glycerol

Purity

> 90% by SDS-PAGE

Tag

His-Tag

Application

SDS-PAGE, Denatured

Storage Condition

Can be stored at +2C to +8C for 1 week. For long term storage, aliquot and store at -20C to -80C. Avoid repeated freezing and thawing cycles.

BACKGROUND

Description

Cathepsin F, also known as CTSF, belongs to the cathepsin family. Cathepsins are papain family cysteine proteinases that represent a major component of the lysosomal proteolytic system. The CTSF gene is ubiquitously expressed, and it maps to chromosome 11q13, close to the gene encoding cathepsin W. CTSF is thought to play a role in normal protein catabolism, and because it is highly expressed in some cancer cell lines, it may be involved in degradative processes occurring during tumor progression. Recombinant human CTSF protein, fused to His-tag at N-terminus, was expressed in E. coli.

Recombinant human Cathepsin F protein

Catalog Number: ATGP2259

Amino acid Sequence

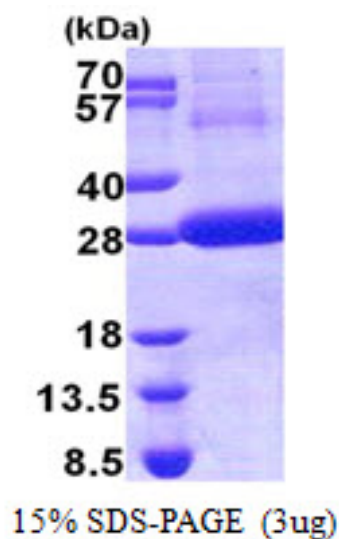
MGSSHHHHHH SSGLVPRGSH MGSAPPEWDW RSKGAVTKVK DQGMCGSCWA FSVTGNVEGQ WFLNQGTLSS
LSEQELDCD KMDKACMGGL PSNAYSIAKN LGGLETEDDY SYQGHMQSCN FSAEKAKVYI NDSVELSQNE QKLAAWLAKR
GPISVAINAF GMQFYRHGIS RPLRPLCSPW LIDHAVLLVG YGNRSDVPFW AIKNSWGTDW GEKGYYYLHR GSGACGVNTM
ASSAVVD

General References

Turk B., et al. (1997) Biol Chem. 378:141-150.
Wang B., et al. (1998) J Biol. 273:32000-32008.

DATA

SDS-PAGE



3ug by SDS-PAGE under reducing condition and visualized by coomassie blue stain.