

Recombinant human HES2 protein

Catalog Number: ATGP2260

PRODUCT INFORMATION

Expression system

E.coli

Domain

1-173aa

UniProt No.

Q9Y543

NCBI Accession No.

NP_061962

Alternative Names

Transcription factor HES-2, bHLHb40, hairy and enhancer of split 2

PRODUCT SPECIFICATION

Molecular Weight

20.9 kDa (196aa)

Concentration

1mg/ml (determined by Bradford assay)

Formulation

Liquid in. 20mM Tris-HCl buffer (pH 8.0) containing 0.4M urea, 10% glycerol

Purity

> 80% by SDS-PAGE

Tag

His-Tag

Application

SDS-PAGE, Denatured

Storage Condition

Can be stored at +2C to +8C for 1 week. For long term storage, aliquot and store at -20C to -80C. Avoid repeated freezing and thawing cycles.

BACKGROUND

Description

Hairy and enhancer of split 2, also known as HES2, is a member of the HES family and contains one basic helix-loop-helix (bHLH) domain and one orange domain. The HES family members form a complex with TLE, the mammalian homologue of Groucho, and this interaction is mediated by the carboxy terminal WRPW motif of the HES proteins. Activation of Notch signaling pathway leads to activation of HES family genes through the interaction between Notch intracellular domain and RBPSuH (CSL). HES2 is expressed in a variety of adult and embryonic tissue. Recombinant human HES2 protein, fused to His-tag at N-terminus, was expressed in E. coli.

Recombinant human HES2 protein

Catalog Number: ATGP2260

Amino acid Sequence

MGSSHHHHHH SSSLVPRGSH MGSMGLPRRA GDAAELRKSL KPLLEKRRRA RINQLSQLK GLILPLLGRE NSNCSKLEKA
DVLEMTVRFL QELPASSWPT AAPLPCDSYR EGYSACVARL ARVLPACRVL EPAVSARLLE HLWRRASAT LDGGRAGDSS
GPSAPAPAPA SAPEPASAPV PSPSPPCGP GLWRPW

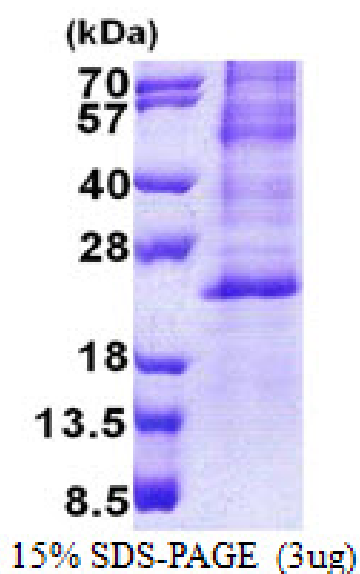
General References

Akazawa C., et al. (1992) J Biol Chem. 267:21879-21885.

Ishibashi M., et al. (1993) J Biochem. 215:645-652.

DATA

SDS-PAGE



3ug by SDS-PAGE under reducing condition and visualized by coomassie blue stain.