

# Recombinant human CCDC25 protein

Catalog Number: ATGP2268

## PRODUCT INFORMATION

---

### Expression system

E.coli

### Domain

1-208aa

### UniProt No.

Q86WR0

### NCBI Accession No.

NP\_060716

### Alternative Names

CCDC25, coiled-coil domain containing 25

## PRODUCT SPECIFICATION

---

### Molecular Weight

26.9 kDa (231aa) confirmed by MALDI-TOF

### Concentration

1mg/ml (determined by Bradford assay)

### Formulation

Liquid in. 20mM Tris-HCl buffer (pH 8.0) containing 0.15M NaCl, 20% glycerol, 1mM DTT

### Purity

> 90% by SDS-PAGE

### Tag

His-Tag

### Application

SDS-PAGE

### Storage Condition

Can be stored at +2C to +8C for 1 week. For long term storage, aliquot and store at -20C to -80C. Avoid repeated freezing and thawing cycles.

## BACKGROUND

---

### Description

CCDC25 is a 208 amino acid protein that belongs to the CCDC25 family. Recombinant human CCDC25 protein, fused to His-tag at N-terminus, was expressed in E. coli and purified by using conventional chromatography techniques

### Amino acid Sequence

MGSSHHHHHH SGLVPRGSH MGSMVFYFTS SSVNSSAYTI YMGKDKYENE DLIKHGWPEI IWFHVDKLSS AHVYLRRLHKG  
ENIEDIPKEV LMDCAHLVKA NSIQGCKMNN VNVVYTPWSN LKKTADMVVG QIGFHRQKDV KIVTVEKKVN EILNRLEKTK

# Recombinant human CCDC25 protein

Catalog Number: ATGP2268

VERFPDLAAE KECRDREERN EKKAQIQEMK KREKEEMKKK REMDELRSYS SLMKVENMSS NQDGNDSDEF M

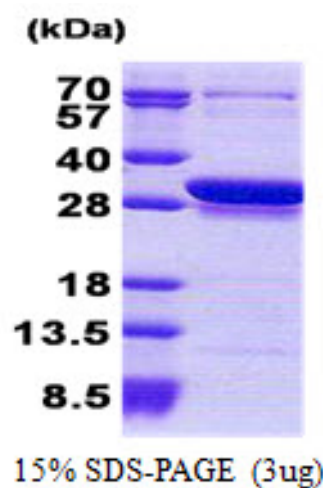
## General References

Mayya V. et al (2009). *Sci. Signal.* 2:RA46-RA46

Olsen J.V. et al (2006). *Cell* 127:635-648

## DATA

### SDS-PAGE



3ug by SDS-PAGE under reducing condition and visualized by coomassie blue stain.