

Recombinant human KXD1 protein

Catalog Number: ATGP2269

PRODUCT INFORMATION

Expression system

E.coli

Domain

1-176aa

UniProt No.

Q9BQD3

NCBI Accession No.

NP_076974

Alternative Names

KXDL motif-containing protein, C19orf50, KXDL, MST096, MSTP096

PRODUCT SPECIFICATION

Molecular Weight

22.1 kDa (199aa) confirmed by MALDI-TOF

Concentration

0.5mg/ml (determined by Bradford assay)

Formulation

Liquid in. 20mM Tris-HCl buffer (pH 8.0) containing 0.15M NaCl, 10% glycerol, 1mM DTT

Purity

> 85% by SDS-PAGE

Tag

His-Tag

Application

SDS-PAGE

Storage Condition

Can be stored at +2C to +8C for 1 week. For long term storage, aliquot and store at -20C to -80C. Avoid repeated freezing and thawing cycles.

BACKGROUND

Description

KXD1 belongs to the KXD1 family and is involved in endosomal cargo sorting. This protein associates with the BLOC-1 complex and Interacts with BLOC1S1. It also Interacts with DTNBP1/BLOC1S7 (via coiled-coil domain). Recombinant human KXD1 protein, fused to His-tag at N-terminus, was expressed in E. coli and purified by using conventional chromatography techniques.

Amino acid Sequence

MGSSHHHHHH SGLVPRGSH MGSMDLPDSA SRVFCGRILS MVNTDDVNAI ILAQKNMLDR FEKTNEMLLN FNNLSSARLQ

Recombinant human KXD1 protein

Catalog Number: ATGP2269

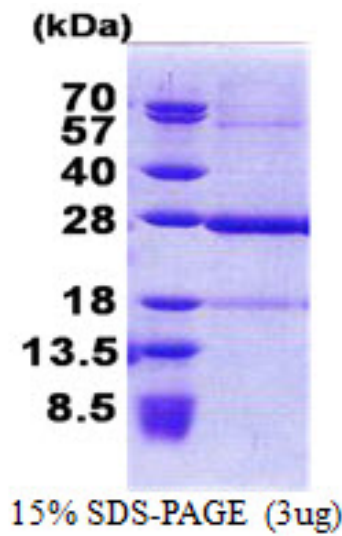
QMSERFLHHT RTLVEMKRDL DSIFRRIRTL KGKLARQHPE AFSHIPEASF LEEEDDPIIP PSTTTTIATS EQSTGSCDTS
PDTVSPSLSP GFEDLSHVQP GSPAINGRSQ TDDEEMTGE

General References

Grimwood J., et al (2004), Nature 428:529-535

DATA

SDS-PAGE



3ug by SDS-PAGE under reducing condition and visualized by coomassie blue stain.