

Recombinant human MIEN1 protein

Catalog Number: ATGP2271

PRODUCT INFORMATION

Expression system

E.coli

Domain

1-112aa

UniProt No.

Q9BRT3

NCBI Accession No.

NP_115715

Alternative Names

Migration and invasion enhancer 1, C17orf37, C35, ORB3, RDX12, XTP4

PRODUCT SPECIFICATION

Molecular Weight

14.5 kDa (135aa) confirmed by MALDI-TOF

Concentration

0.5mg/ml (determined by Bradford assay)

Formulation

Liquid in. 20mM Tris-HCl buffer (pH 8.0) containing 0.15M NaCl, 10% glycerol, 1mM DTT

Purity

> 95% by SDS-PAGE

Tag

His-Tag

Application

SDS-PAGE

Storage Condition

Can be stored at +2C to +8C for 1 week. For long term storage, aliquot and store at -20C to -80C. Avoid repeated freezing and thawing cycles.

BACKGROUND

Description

MIEN1 belongs to the SelWTH family. This protein Increases cell migration by inducing filopodia formation at the leading edge of migrating cells and plays a role in regulation of apoptosis, possibly through control of CASP3. It also may be involved in a redox-related process. Recombinant human MIEN1 protein, fused to His-tag at N-terminus, was expressed in E. coli and purified by using conventional chromatography techniques.

Amino acid Sequence

MGSSHHHHHH SGLVPRGSH MGSMGEPGQ TSVAPPPEEV EPGSGVRIVV EYCEPCGFEA TYLELASAVK EQYPGIEIES

Recombinant human MIEN1 protein

Catalog Number: ATGP2271

RLGGTGAFEI EINGQLVFSK LENGGFPEYK DLIEAIRRAS NGETLEKITN SRPPC

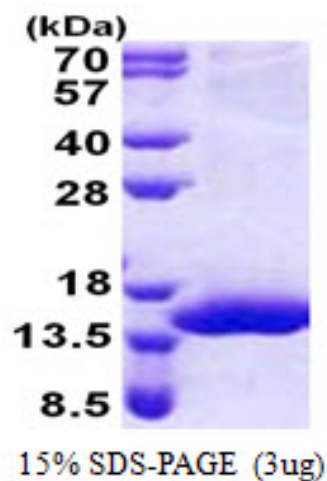
General References

Dasgupta,S., et al. (2011) J. Biol. Chem. 286 (29), 25935-25946

Katz,E., et al. (2011) Anal Cell Pathol (Amst) 34 (1-2), 35-48

DATA

SDS-PAGE



3ug by SDS-PAGE under reducing condition and visualized by coomassie blue stain.